

Design IoT Projects with Raspberry Pi, Arduino and ESP32

Programming with Node-RED

The Node-RED interface shows a complex flowchart with the following components and connections:

- Inputs:** Two MQTT nodes with addresses `etsp05/enocean/00 8B FA E2` and `etsp05/enocean/00 8B 76 EB`. A `tweets` node.
- Logic:** A `Switch` node connects the first MQTT input to `Lab Lamp` and `Lab Fan`. A `Rocker` node connects the second MQTT input to `Lab Fan` and `Red LED Appear`. A `Split out English tweets` node connects the `tweets` input to a `sentiment` node and a `debug` node. The `sentiment` node connects to a `Filter Positive Tweets` node, which also connects to another `debug` node.
- Outputs:** `Lab Lamp`, `Lab Fan`, `Red LED Appear`, `Red LED Scroll`, `Big Clock (top)`, `To Realtime`, and `ETSlab`.
- Other:** A `create UIF message` node receives input from `lab/fixed/iris/id` and connects to `To Realtime` and `ETSlab`.

Below the Node-RED interface, a diagram illustrates the hardware setup:

- A **NodeMCU** board is connected to a **Button**.
- The **NodeMCU** is connected to a **Wi-Fi Router**.
- The **Wi-Fi Router** is connected to a **Raspberry Pi**.
- The **Raspberry Pi** is connected to **Node-RED + MQTT**.
- The **Raspberry Pi** is also connected to an **LED**.

To the right of the hardware diagram, three real-time monitoring dashboards are shown:

- Ambient Temperature:** gauge showing 29.07 C.
- Ambient Humidity:** gauge showing 43.66 %.
- Ambient Pressure:** gauge showing 978.1 hPa.

Each gauge has a corresponding line graph below it showing data over time.

Programming with Node-RED

Design IoT Projects with Raspberry Pi, Arduino and ESP32



Dogan Ibrahim



elektor

LEARN > DESIGN > SHARE

● This is an Elektor Publication. Elektor is the media brand of
Elektor International Media B.V.
78 York Street, London W1H 1DP, UK
Phone: (+44) (0)20 7692 8344

● All rights reserved. No part of this book may be reproduced in any material form, including photocopying, or storing in any medium by electronic means and whether or not transiently or incidentally to some other use of this publication, without the written permission of the copyright holder except in accordance with the provisions of the Copyright Designs and Patents Act 1988 or under the terms of a licence issued by the Copyright Licensing Agency Ltd., 90 Tottenham Court Road, London, England W1P 9HE. Applications for the copyright holder's permission to reproduce any part of the publication should be addressed to the publishers.

● Declaration

The author and publisher have used their best efforts in ensuring the correctness of the information contained in this book. They do not assume, or hereby disclaim, any liability to any party for any loss or damage caused by errors or omissions in this book, whether such errors or omissions result from negligence, accident or any other cause..

● British Library Cataloguing in Publication Data

A catalogue record for this book is available from the British Library

● **ISBN 978-1-907920-88-2**

© Copyright 2020: Elektor International Media b.v.

Prepress Production: D-Vision, Julian van den Berg

First published in the United Kingdom 2020



Elektor is part of EIM, the world's leading source of essential technical information and electronics products for pro engineers, electronics designers, and the companies seeking to engage them. Each day, our international team develops and delivers high-quality content - via a variety of media channels (including magazines, video, digital media, and social media) in several languages - relating to electronics design and DIY electronics. www.elektormagazine.com

LEARN > DESIGN > SHARE

Preface	13
Chapter 1 • Raspberry Pi 4	15
1.1 Overview	15
1.2 Parts of the Raspberry Pi 4	15
1.3.1 Setup option 1	18
1.3.2 Setup option 2	19
Summary	19
Chapter 2 • Installing the Raspberry Pi operating system	20
2.1 Overview	20
2.2 Raspbian Buster installation steps on Raspberry Pi 4	20
2.3 Remote access	22
2.4 Using Putty	23
2.4.1 Configuring Putty	24
2.5 Remote access of the desktop	25
2.6 Summary	26
Chapter 3 • Using the command line	27
3.1 Overview	27
3.2 The Raspberry Pi directory structure	27
3.3 File permissions	28
3.4 Help	32
3.5 Date, time, and calendar	33
3.6 File operations	33
3.7 System and user information	35
3.8 Resource monitoring on Raspberry Pi	37
3.9 Shutting down	39
3.10 Summary	40
Chapter 4 • Installing Node-RED software on Raspberry Pi	41
4.1 Overview	41
4.2 Raspberry Pi Node-RED installation	41
4.3 Node-RED interface to external world	43
4.4 Node-RED screen layout	44
4.5 Project 1 – Hello World!	44

4.6 Project 2 – Date and time	47
4.7 Project 3 – Temperature conversion	52
4.8 Importing and exporting flow programs	54
4.8.1 Exporting flows	54
4.8.2 Importing aflow	55
4.9 Copying nodes in the same workspace	55
4.10 Core nodes	55
4.10.1 Input nodes	55
4.10.2 Output nodes	56
4.10.3 Function nodes	57
4.10.4 Social nodes	58
4.10.5 Storage nodes	58
4.10.6 Analysis nodes	58
4.10.7 Advanced nodes	58
4.10.8 Raspberry Pi nodes	58
4.11 Project 4 – Dice number	59
4.12 Project 5 – Double dice numbers	60
4.13 Project 6 – Unit conversions - Multiple inputs to a function	62
4.14 Multiple inputs and multiple outputs from a function	65
4.15 Project 7 – Mean of numbers - Using the smooth node	67
4.16 Project 8 – Squares of numbers	68
4.17 Project 9 – Getting the weather reports – Display the local weather report	70
4.18 Project 10 – Display the current temperature	73
4.19 Project 11 – Sending the current temperature to an email	74
4.20 Project 12 – Sending the current temperature and atmospheric pressure to your twitter account	76
4.21 Node-RED configuration	78
4.22 Summary	79
Chapter 5 • Node-RED based Raspberry Pi projects using GPIO	80
5.1 Overview	80
5.2 GPIO – Parallel interface	80
5.3 Project 13 – LED control	82
5.4 Project 14 – Flashing LED	85

5.4.1 Using a context variable to flash the LED	87
5.5 Project 15 – Alternately flashing LEDs	88
5.5.1 Using context variables to flash the LEDs alternately.	89
5.6 Project 16 – Temperature alarm with buzzer.	90
5.7 Project 17 – Controlling a GPIO port remotely using email	93
5.8 Project 18 – Confirmation of the buzzer state	95
5.9 Project 19 – Controlling multiple GPIO ports remotely using email.	98
5.10 Project 20 – Traffic lights simulator	102
5.11 Project 21 – Push-Button switch input	106
5.12 Project 22 – Changing LED brightness – The PWM output	110
5.13 Summary	112
6.1 Overview	113
6.2 Raspberry Pi I ² C ports	114
6.3 I ² C LCD	115
6.4 Installing the I ² C LCD software on Node-RED	115
6.5 Project 23 – Displaying current time on the LCD	118
6.6 Project 24 – Displaying local temperature and humidity on the LCD.	120
6.7 Project 25 – Displaying dice numbers.	120
6.8 Project 26 – Event counter with LCD	122
6.9 Project 27 – DHT11 temperature and humidity sensor with LCD Display.	124
6.10 Project 28 – Ultrasonic distance sensor with LCD display	129
6.11 Project 29 – Ultrasonic distance alarm with buzzer	134
6.12 Project 30 – Ultrasonic car parking system with buzzer	135
6.13 Using a parallel LCD.	137
6.14 Project 31 – Displaying message on a parallel LCD	139
6.15 Summary	141
Chapter 7 • Using ADC in Raspberry Pi Node-RED projects.	142
7.1 Overview	142
7.2 The MCP3002 ADC.	142
7.3 Project 32 – Voltmeter with LCD output	144
7.4 Project 33 – Temperature measurement using analog sensor	146
7.5 Project 34 – ON/OFF temperature control.	148

- 7.6 Summary 152
- Chapter 8 • The dashboard palette 153**
- 8.1 Overview 153
- 8.2 Installing the dashboard. 153
- 8.3 Project 35 – Using a gauge to display the temperature 154
- 8.4 Using a Line Chart to display the temperature. 156
- 8.5 Using a Bar Chart to display the temperature 157
- 8.6 Project 36 – Using gauges to display the temperature and humidity 158
- 8.7 Project 37 – Using multiple gauges 160
- 8.8 Project 38 – Using a slider to change LED brightness. 161
- 8.9 Project 39 – Using button nodes to control an LED 163
- 8.10 Project 40 – Using switch and text nodes to control an LED 165
- 8.11 Project 41 – Talking weather forecast. 166
- 8.12 Configuring the dashboard 169
- 8.13 Summary 169
- Chapter 9 • Wi-Fi UDP/TCP Network-Based projects. 170**
- 9.1 Overview 170
- 9.2 Project 42 – Controlling an LED from a mobile phone –
UDP based communication 170
- 9.3 Project 43 – Controlling multiple LEDs from a mobile phone – UDP based
communication 173
- 9.5 Project 45 – Controlling an LED from a mobile phone –
TCP based communication 178
- 9.6 Project 46 – Controlling Multiple LEDs From a Mobile Phone –
TCP Based Communication 181
- 9.7 Project 47 – Sending the temperature and humidity to the mobile phone –
TCP based communication 182
- 9.8 Project 48 – Chat program – Mobile phone to Raspberry Pi chat 184
- 9.9 Project 49 – Using the ping. 187
- 9.10 Summary 189
- Chapter 10 • Storage Nodes. 190**
- 10.1 Overview 190
- 10.2 Project 50 – Storing timestamped temperature and
humidity data in a file 190

10.3 Project 51 – Reading contents of a file	192
10.4 Project 52 – Reading a file line by line	195
10.5 Summary	197
Chapter 11 • Serial communication	198
11.1 Overview	198
11.2 Project 53 – Communicating with Arduino over serial line	199
11.3 Project 54 – Receiving serial data – Receiving GPS data	204
11.4 Project 55 – Receiving GPS data – Extracting the latitude and longitude.	208
11.5 Project 56 – Displaying our location on a map.	212
11.6 Project 57 – Sending out serial data to arduino	216
11.7 Project 58 – Connecting Raspberry Pi and Arduino Uno using USB ports.	220
11.8 Project 59 – Sending serial data from Raspberry Pi to Arduino over RF Radio . . .	222
11.9 Summary	224
Chapter 12 • Using Sense HAT	225
12.1 Overview	225
12.2 The Sense HAT board	225
12.3 Node-RED Sense HAT nodes	226
12.4 Project 60 - Displaying the temperature, humidity, and pressure (environmental events)	227
12.5 Project 61 - Displaying the compass heading (motion events)	229
12.6 Project 62 - Displaying the acceleration (motion events)	230
12.7 Project 63 - Displaying the orientation (motion events)	231
12.8 Using the joystick	233
12.9 Using the LED matrix	234
12.10 Project 64 – Random flashing LED lights having random colours	238
12.11 Project 65 – Display of temperature by LED count	239
12.12 Displaying and scrolling data on LED Matrix	242
12.13 Project 66 – Scrolling the pressure readings on the LED matrix	242
12.14 Summary	244
Chapter 13 • Node-RED with Arduino Uno	245
13.1 Overview	245
13.2 Installing Node-RED For Arduino Uno	245

13.3 Project 67 – Flashing LED	247
13.4 Project 68 – Displaying the ambient temperature in the debug window	248
13.5 Project 69 – Displaying the ambient temperature in the dashboard	250
13.6 Project 70 – Displaying the ambient temperature as gauge and chart	251
13.7 Using the Arduino Uno serial port	253
13.7.1 Project 71 – Using the DHT11 with the Arduino	253
13.8 Summary	256
Chapter 14 • Using the ESP32 DevkitC with Node-RED	257
14.1 Overview	257
14.2 ESP32 DevKitC and Node-RED.	259
14.3 Project 72 – Controlling an LED connected to ESP32 DevKitC	259
14.4 Summary	262
Chapter 15 • Using Amazon Alexa in Node-RED projects	263
15.1 Overview	263
15.2 Project 73 – Controlling an LED using Alexa	263
15.3 Project 74 – Controlling an LED and a buzzer using Alexa	265
15.4 Summary	268
Chapter 16 • Accessing Raspberry Pi Node-RED from anywhere	269
16.1 Overview	269
16.2 The ngrok	269
16.3 Starting Node-RED automatically at reboot time	271
16.4 Summary	271
Chapter 17 • Using Bluetooth with Node-RED	272
17.1 Overview	272
17.2 Project 75 – Controlling an LED and a buzzer using Bluetooth	272
17.3 Summary	276
Chapter 18 • Node-RED and MQTT	278
18.1 Overview	278
18.2 How MQTT works	278
18.3 The Mosquitto broker	280
18.4 Using MQTT in home automation and in IoT projects	281
18.5 Project 76 – Controlling an LED using MQTT	282

18.6 The ESP8266 processor	283
18.7 Project 77 – Flashing an LED using ESP8266 NodeMCU	285
18.8 Using the ESP8266 NodeMCU with MQTT	287
18.9 Project 78 – Controlling an LED using ESP8266 NodeMCU with MQTT – LED connected to Raspberry Pi	288
18.10 Project 79 – Controlling an LED using ESP8266 NodeMCU with MQTT – LED connected to ESP8266 NodeMCU	293
18.11 Summary	299
Chapter 19 • Using HTTP in Node-RED projects.	300
19.1 Overview	300
19.2 Using HTTP GET.	300
19.3 Web server	301
19.4 Project 80 – Controlling 4 Relays using web server	302
19.5 Summary	308
Appendix A • The function node.	309
A.1 Overview	309
A.2 Variables	309
A.3 Multiple outputs	310
A.4 String manipulation	310
A.5 Mathematical functions	313
A.6 Number conversions and checking numbers	314
A.7 Date	315
A.8 Arrays	315
A.9 Conditional statements	316
A.10 Repetition (loops)	317
A.12 Examples	319
Appendix B • Flow programs used in the book	321
A.1 Overview	321
A.2 Using the flow programs	321
Appendix C • Components used in the book	322
Index	323

Preface

It is becoming important for microcontroller users to adapt to new technologies quickly and learn the architecture and use of high-performance 32-bit microcontrollers. Several manufacturers offer 32-bit microcontrollers as general-purpose processors in embedded applications. ARM architecture is currently one of the most frequently used 32-bit microcontroller architectures in mobile devices, such as in mobile phones, iPads, games consoles, and in many other portable devices.

Raspberry Pi is based on ARM architecture and it is currently one of the most commonly used single-board computers used by students, engineers, and hobbyists. There are hundreds of Raspberry Pi based projects available on the internet

Arduino is also a very popular microcontroller development board. Although it is based on 8-bit architecture, it is widely used as it is supported by large numbers of software libraries, making it easy to develop projects in relatively short times.

Another popular microcontroller is ESP32. It is widely sold as a development board known as the ESP32 DevKitC. The reason why ESP32 is very popular is that it has onboard Wi-Fi and Bluetooth capability, many digital and analog input ports, and built-in timers. Additionally, its power consumption is very low and it has a processor that can be put into sleep mode, which consumes extremely low current.

The Internet of Things (IoT) is becoming a major application area of embedded systems. As a result, more people are becoming interested in learning about embedded design and programming. In addition, we can see that more technical colleges and universities are moving away from legacy 8-bit and 16-bit microcontrollers and introducing 32-bit embedded microcontrollers into their curriculums. Some IoT applications demand precision, high processing power, and very low power consumption.

Node-RED is an open-source visual editor for wiring the Internet of Things produced by IBM. Node-RED comes with a large number of nodes to handle a variety of tasks. The required nodes are selected and joined together to perform a particular task. Node-RED is based on flow type programming where nodes are configured and joined together to form an application program. There are nodes for doing very complex tasks, including web access, Twitter, E-mail, HTTP, Bluetooth, MQTT, controlling GPIO ports, etc. The nice thing about Node-RED is that the programmer does not need to learn how to write complex programs. For example, an email can be sent by joining a few nodes together and writing a few lines of code.

The aim of this book is to teach how Node-RED can be used in projects. The main processor used in the majority of projects in this book is Raspberry Pi 4. Chapters are included to show how Node-RED can be used with Arduino Uno, ESP32 DevKitC, and the ESP8266 NodeMCU microcontroller development boards.

Many example projects are given in the book. All projects have been fully tested and were working at the time of writing this book. Users can select flow programs of the projects from the book website and configure them to suit their own applications. The operation of each flow program is fully described in the book.

I hope you enjoy reading this book and are then able to use Node-RED happily in your future projects.

Prof Dr. Dogan Ibrahim
London, 2020

Chapter 1 • Raspberry Pi 4

1.1 Overview

Raspberry Pi has recently become one of the most popular and most powerful single-board computers used by students, hobbyists, and professional engineers. Raspberry Pi 4 is the latest and the most powerful version of Raspberry Pi. In this chapter, we will be looking at the basic specifications and requirements of the Raspberry Pi 4 computer. What is included in this chapter can easily be applied to other models in the Raspberry Pi family.

1.2 Parts of the Raspberry Pi 4

Just like its earlier versions, Raspberry Pi 4 is a single-board computer having the following basic specifications:

- 1.5GHz 64-bit quad-core CPU
- 1GB, 2GB, or 4GB RAM
- 2.4GHz and 5.0GHz IEEE 802.11ac Wi-Fi
- Bluetooth 5.0 BLE
- Gigabit Ethernet
- 2 x USB 3.0, 2 x USB 2.0 and 1 x USB-C ports
- 2 x micro-HDMI ports for dual display, supporting up to 4K resolution
- DSI display and CSI camera ports
- micro SD card slot for the operating system and data storage
- 4-pole stereo audio and composite video port
- 40-pin GPIO header
- Power over Ethernet (PoE) enabled with the PoE HAT
- OpenGL ES 3.0 graphics

Figure 1 shows the Raspberry Pi 4 board with its major components identified.

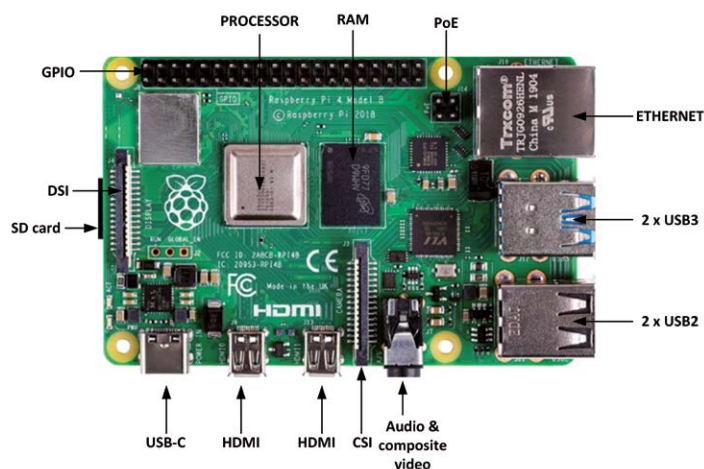


Figure 1.1 Raspberry Pi 4 board

A brief description of the various components on the board is given below:

Processor: the processor is enclosed in a metal cap and it is based on Broadcom BCM2711B0, which consists of a Cortex A-72 core, operating at 1.5GHz.

RAM: There are 3 versions of Raspberry Pi 4 depending on the amount of DDR4 RAM required: 1GB, 2GB, and 4GB.

USB Ports: Raspberry Pi 4 includes 2 x USB 3.0, 2 x USB 2.0, and 1 x USB-C ports. USB 3.0 data transfer rate is 4,800 Mbps (megabits per second), while USB 2.0 can transfer at up to 480Mbps, i.e. 10 times slower than the USB 2.0. The USB-C port enables the board to be connected to a suitable power source.

Ethernet: The Ethernet port enables the board to be connected directly to an Ethernet port on a router. The port supports Gigabit connections (125Mbps).

HDMI: Two micro HDMI ports are provided that support up to 4K screen resolutions. HDMI adapters can be used to interface the board to standard size HDMI devices.

GPIO: A 40-pin header is provided as the GPIO (General Purpose Input Output). This is compatible with the earlier GPIO ports.

Audio and Video Port: A 3.5mm jack type socket is provided for stereo audio and composite video interface. Headphones can be connected to this port. External amplifier devices will be required to connect speakers to this port. This port also supports composite video, enabling TVs, projectors, and other composite video compatible display devices to be connected to the port.

CSI Port: This is the camera port (Camera Serial Interface), allowing a compatible camera to be connected to the Raspberry Pi.

DSI Port: This is the display port (Display Serial Interface), allowing a compatible display (e.g. 7 inch Raspberry Pi display) to be connected to the Raspberry Pi.

PoE Port: This is a 4-pin header, allowing the Raspberry Pi to receive power from a network connection.

Micro SD Card: This card is mounted at the cardholder placed at the bottom of the board and it holds the operating system software as well as the operating system and user data. Requirements of the Raspberry Pi 4

As listed below, a number of external devices are required before the Raspberry Pi can be used:

- Power supply
- Micro SD card

- Operating system software
- USB keyboard and mouse
- A micro HDMI cable to receive sound and video signals
- HDMI compatible display or TV (you may also need to have micro HDMI to DVI-D or VGA adapters. A 3.5mm TRRS type cable and plug will be required if you will be using an old TV with composite video)

Power Supply: A 5V 3A power supply with a USB-C type connector is required. You may either purchase the official Raspberry Pi 4 power supply (Figure 1.2) or use a USB-C adapter to provide power from an external source.



Figure 1.2 Official Raspberry Pi 4 power supply

Micro SD Card: It is recommended to use a micro SD card with a capacity of at least 8GB, although higher capacity (e.g. 16GB or 32GB) is better as there will be room to grow in the future. A Class 10 (or faster) card is recommended.

Operating System: You can purchase the operating system pre-loaded on a micro SD card, known as NOOBS (New Out Of Box Software) which requires minimum configuration before it is fully functional. The alternative is to purchase a blank micro SD card and upload the operating system on this card. The steps to prepare a new micro SD card with the operating system is given in the next Chapter.

USB Keyboard and Mouse: You can either use a wireless or wired keyboard and mouse pair. If using a wired pair, you should connect the keyboard to one of the USB ports and the mouse to another USB port. If using a wireless keyboard and mouse, you should connect the wireless dongle to one of the USB ports.

Display: A standard HDMI compatible display monitor with a micro HDMI to standard HDMI adapter can be used. Alternatively, a VGA type display monitor with a micro HDMI to VGA adapter or DVI-D adapter can be used. If you have an old TV with a composite video interface, then you can connect it to the Raspberry Pi 3.5mm port with a TRRS type connector. You may also consider purchasing additional parts, such as a case, CPU fan, and so on. The case is very useful as it protects your Raspberry Pi electronics. The working temperature of the CPU can go as high as 80 degrees Centigrade. Using a fan (see Figure 1.3) makes the CPU more efficient as it can lower its temperature by about 50%.



Figure 1.3 Raspberry Pi 4 CPU fan (www.seeedstudio.com)

1.3.1 Setup option 1

As shown in Figure 1.4, in this option various devices are connected directly to the Raspberry Pi 4. Depending on what type of display monitor we have, we can use an HDMI display, VGA monitor, DVI-D monitor, or TV. Notice that depending on the external USB devices used, you can use either the USB 2.0 or the USB 3.0 ports.

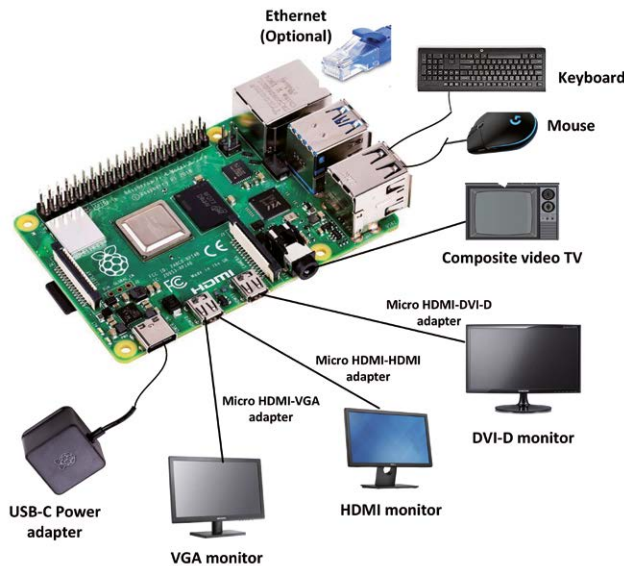


Figure 1.4 Raspberry Pi 4 setup - option 1

1.3.2 Setup option 2

In this option, shown in Figure 1.5, a powered hub is used to connect the USB devices.

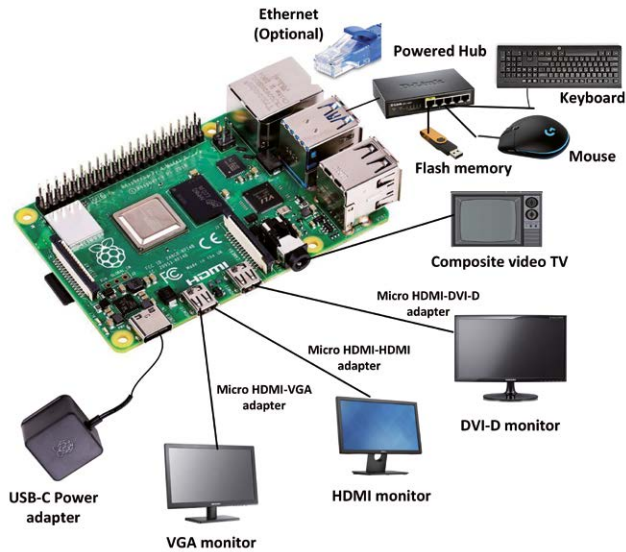


Figure 1.5 Raspberry Pi 4 setup – option 2

Summary

In this chapter, we have learned about the main parts and their functions of the Raspberry Pi 4 board. In addition, we have learned how to configure Raspberry Pi 4.

In the next chapter, we will be learning how to install the latest Raspberry Pi operating system, Raspbian Buster, on a new blank micro SD card.

Chapter 2 • Installing the Raspberry Pi operating system

2.1 Overview

In the last chapter, we had a look at some of the hardware features of Raspberry Pi 4 and learned how to set up the hardware using various external devices. In this chapter, we will be learning how to install the latest Raspberry Pi operating system, Raspbian Buster, on an SD card.

2.2 Raspbian Buster installation steps on Raspberry Pi 4

Raspbian Buster is the latest operating system of Raspberry Pi 4. This section gives the steps for installing this operating system on a new blank SD card, ready to use with your Raspberry Pi 4. You will need a micro SD card with a capacity of at least 8GB (16 GB is preferable) before installing the new operating system on it.

The steps to install Raspbian Buster are as follows:

- Download the Buster image to a folder on your PC (e.g. C:\RPiBuster) from the following link by clicking the Download ZIP under section **Raspbian Buster with desktop and recommended software** (see Figure 2.1). At the time of writing this book the file was called: **2019-07-10-raspbian-buster-full.img**. You may have to use the Windows 7Zip software to unzip the download since some of the features are not supported by older unzip software.

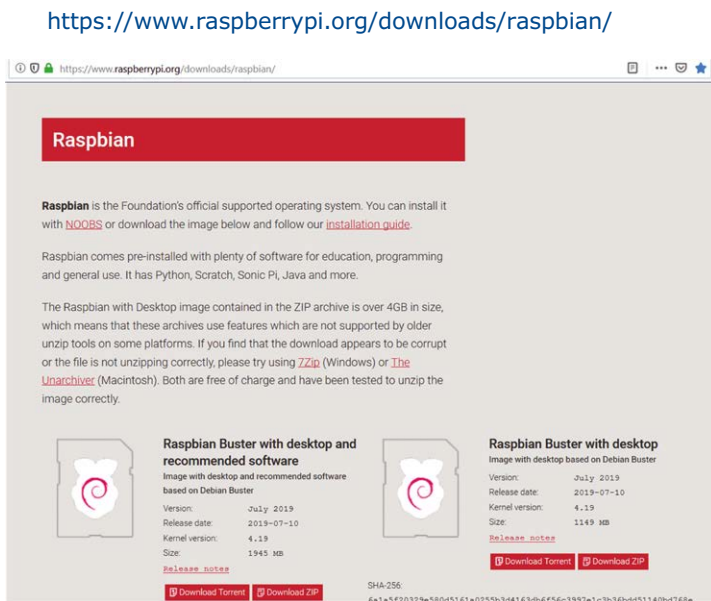


Figure 2.1 Raspbian Buster download page

- Put your blank micro SD card into the card slot on your computer. You may need to use an adapter to do this.

- Download the Etcher program to your PC to flash the disk image. The link is (see Figure 2.2):

<https://www.balena.io/etcher/>

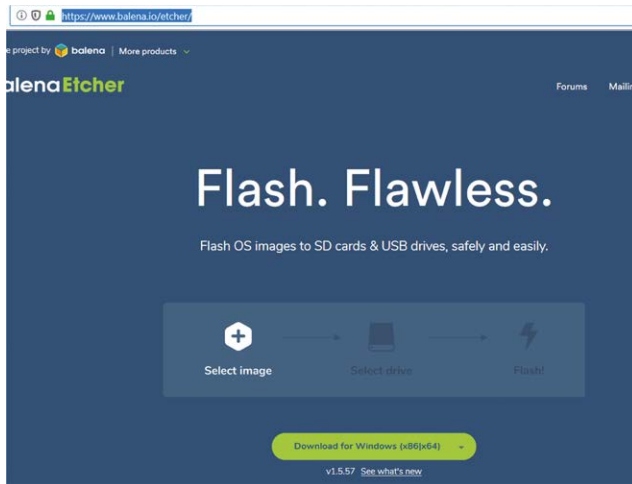


Figure 2.2 Download Etcher

- Double click to Open Etcher, and click **Select image**. Select the Raspbian Buster file you just downloaded.
- Click **Select target** and select the micro SD card.
- Click **Flash** (see Figure 2.3). This may take several minutes, wait until it is finished. The program will then validate and unmount the micro SD card. You can remove your micro SD card after it is unmounted.



Figure 2.3 Click Flash to flash the disk image

- You are now ready to use your micro SD card on your Raspberry Pi 4.

- Connect your Raspberry Pi 4 to a HDMI monitor (you may need to use an adapter cable for mini HDMI to standard HDMI conversion), connect a USB keyboard, and power up the Raspberry Pi.
- You will see the startup menu displayed on the monitor. Click Next to get started.
- Select the Wi-Fi network and enter the password of your Wi-Fi router.
- Click on the Wi-Fi icon at the top right-hand side of the screen and note the Wireless IP address of your Raspberry Pi (notice that this IP address is not static and it can change next time you power-up your Raspberry Pi).
- You should now be ready to use your Raspberry Pi 4 (see Desktop in Figure 2.4).

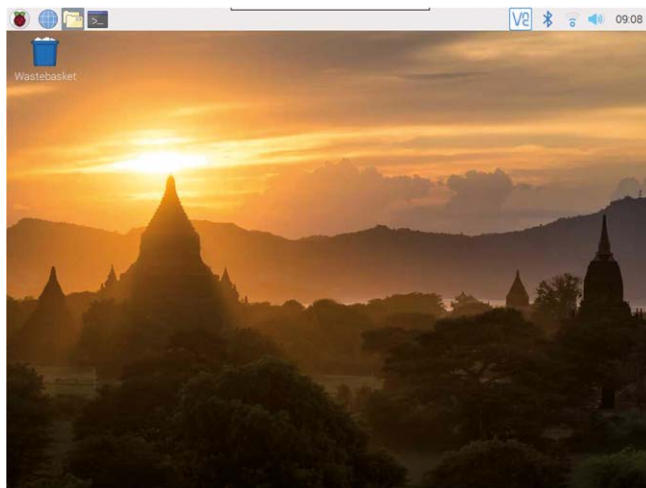


Figure 2.4 Raspberry Pi 4 desktop

Notice that the IP address of your Raspberry Pi can also be seen in your router. You can also get the IP address of your Raspberry Pi using your mobile phone. There are several programs free of charge that can be installed on your mobile phone that will show you the IP addresses of all the devices connected to your router. In this section, the use of the Android **apps** called **Who's On My Wi-Fi – Network Scanner** by *Magdalm* is used to show how the IP address of your Raspberry Pi can be displayed. Running this program will display the Raspberry Pi Wireless IP address under the heading **Raspberry Pi Trading Ltd**. In addition to the IP address, other parameters such as MAC address, gateway address, IP mask, etc are all displayed by this program.

2.3 Remote access

It is much easier to access the Raspberry Pi remotely over the Internet, for example using a PC rather than connecting a keyboard, mouse, and display to it. Before being able to access your Raspberry Pi remotely, we have to enable the SSH and the VNC by entering the following command at a terminal session:

```
pi$raspberrypi:~ $ sudo raspi-config
```

Go to the configuration menu and select **Interface Options**. Go down to **P2 SSH** (see Figure 2.5) and enable SSH. Click **<Finish>** to exit the menu.

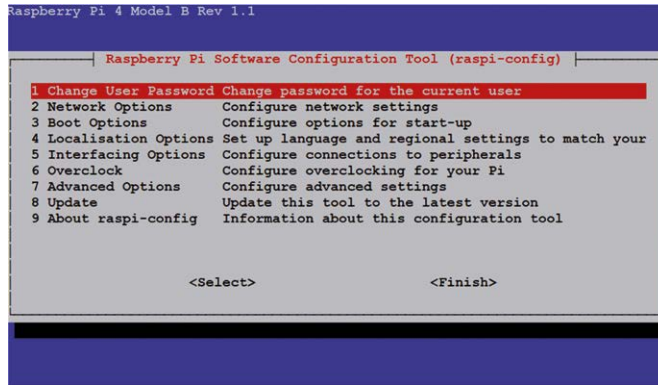


Figure 2.5 Enable SSH

You should also enable VNC so that your Raspberry Pi can be accessed graphically over the Internet. This can be done by entering the following command at a terminal session:

```
pi$raspberrypi:~ $ sudo raspi-config
```

Go to the configuration menu and select **Interface Options**. Go down to **P3 VNC** and enable VNC. Click **<Finish>** to exit the menu. At this stage, you may want to shut down your Raspberry Pi by clicking the **Applications Menu** on Desktop and selecting the **Shutdown** option.

2.4 Using Putty

Putty is a communications program that is used to create a connection between your PC and Raspberry Pi. This connection uses a secure protocol called SSH (Secure Shell). Putty doesn't need to be installed as it can just be stored in any folder of your choice and run from there.

Putty can be downloaded from the following web site:

<https://www.putty.org/>

Simply double click to run it and the Putty startup screen will be displayed. Click **SSH** and enter the Raspberry Pi IP address, then click **Open** (see Figure 2.6). The message shown in Figure 2.7 will be displayed the first time you access your Raspberry Pi. Click **Yes** to accept this security alert.

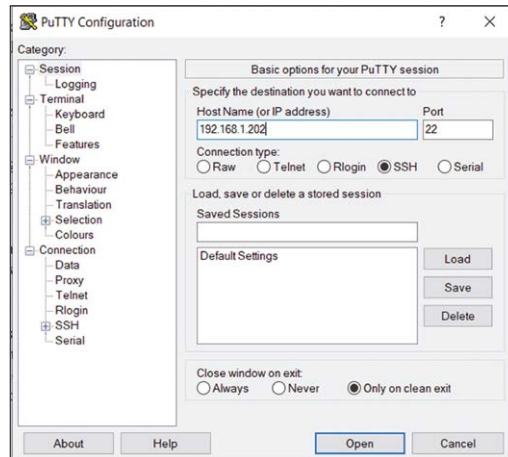


Figure 2.6 Putty startup screen



Figure 2.7 Click Yes to accept

You will be prompted to enter the username and password. Notice that the default username and password are:

username: **pi**
 password: **raspberry**

You now have a terminal connection with the Raspberry Pi and you can type in commands, including sudo commands. You can use the cursor keys to scroll up and down through the commands you've previously entered in the same session. You can also run programs although not graphical programs.

2.4.1 Configuring Putty

By default, the Putty screen background is black with white foreground characters. In this book, we used a white background with black foreground characters, with the character size set to 12 points bold. The steps to configure Putty with these settings are given below. Notice that in this example the settings are saved with the name **RPI4** so that they can be recalled whenever Putty is re-started:

- Restart Putty
- Select **SSH** and enter the Raspberry Pi IP address
- Click **Colours** under **Window**
- Set the **Default Foreground** and **Default Bold Foreground** colours to black (Red:0, Green:0, Blue:0)
- Set the **Default Background** and **Default Bold Background** to white (Red:255, Green:255, Blue:255)
- Set the **Cursor Text** and **Cursor Colour** to black (Red:0, Green:0, Blue:0)
- Select **Appearance** under **Window** and click **Change** in **Font settings**. Set the font to **Bold 12**.
- Select **Session** and give a name to the session (e.g. RPI4) and click **Save**.
- Click **Open** to open the Putty session with the saved configuration
- Next time you re-start Putty, select the saved session and click **Load** followed by **Open** to start a session with the saved configuration

2.5 Remote access of the desktop

You can control your Raspberry Pi via Putty, and run programs on it from your Windows PC. This, however, will not work with graphical programs because Windows doesn't know how to represent the display. As a result of this, for example, we cannot run any graphical programs in the Desktop mode. We can get around this problem using some extra software. Two popular programs used for this purpose are VNC (Virtual Network Connection), and Xming. Here, we will be learning how to use VNC.

Installing and using VNC

VNC consists of two parts: VNC Server and VNC Viewer. VNC Server runs on the Raspberry Pi, and VNC Viewer runs on the PC. VNC server is already installed on your Raspberry Pi. You can start the server by entering the following command in the command mode:

```
pi$raspberrypi:~ $ vncserver :1
```

The steps to install and use VNC Viewer on your PC are given below:

- There are many VNC Viewers available, but the recommended one is TightVNC which can be downloaded from the following web site:

<https://www.tightvnc.com/download.php>

- Download and install **TightVNC** software for your PC. You will have to choose a password during the installation.
- Start **TightVNC Viewer** on your PC and enter the Raspberry Pi IP address (see Figure 2.8) followed by :1. Click **Connect** to connect to your Raspberry Pi.

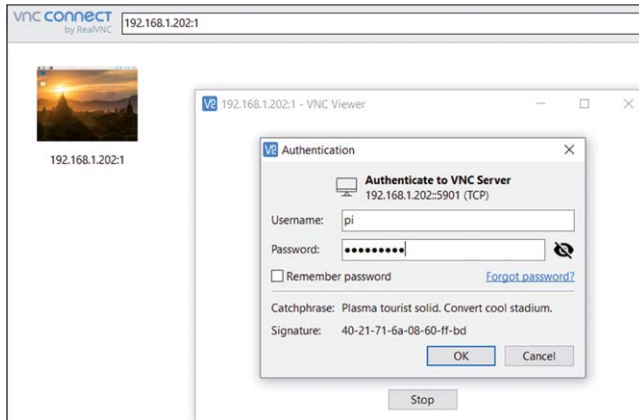


Figure 2.8 Start the TightVNC and enter the IP address

Figure 2.9 shows the Raspberry Pi Desktop displayed on the PC screen.

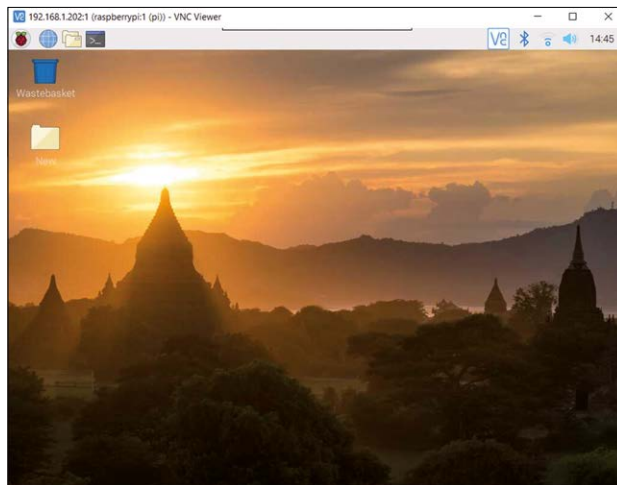


Figure 2.9 Raspberry Pi Desktop on the PC screen]

2.6 Summary

In this chapter, we have learned how to install the latest Raspberry Pi operating system on an SD card. Now that the software has been installed and our Raspberry Pi is working, in the next chapter, we will look at some of the important commands of the Raspberry Pi operating system.

Index**A**

Acceleration, 230
 ADC, 147
 Advanced nodes, 58
 Alexa, 263
 Amazon Alexa, 263
 Analog sensor, 146
 Analysis nodes, 58
 Arduino, 199, 245
 Arrays, 315
 Atmospheric pressure, 76
 Auto-pan, 213

B

Bar chart, 157
 Baud rate, 198
 Bluetooth, 272
 Break, 318
 Broker, 279
 Button, 106
 Button node, 163
 Buzzer, 92, 135

C

Cat, 34
 Chart, 156
 Chat, 184
 Comment node, 106
 Context variable, 87, 309
 Compass heading, 229
 Conditional statements, 316
 Continue, 318
 Copying node, 55
 Core nodes, 55
 CSI port, 16

D

Dashboard, 153
 Dashboard nodes, 153
 Date and time, 47
 DELETE, 300
 DevKitC, 257
 DHT11, 124, 253
 DHT22, 124

Disk usage, 39
 Distance sensor, 129
 DSI port, 16
 Duty cycle, 111

E

Email, 74, 93
 Email in, 93
 Email out, 97
 ESP32, 257
 ESP8266, 283
 Etcher, 21
 Event counter, 122
 Exporting, 54

F

File operation, 33
 File permission, 28
 Firmata, 247
 Flashing LED, 85
 Flow variables, 309
 Functions, 319
 Function nodes, 57, 309

G

Gauge, 154, 251
 GET, 300
 GPIO connector, 80
 GPIO pins, 81
 GPS, 204
 GPS click, 206
 Gyroscope, 227

H

Halt, 40
 HC-SR04, 129
 HD44780, 137
 HDMI, 16
 Horizontal bar chart, 158
 HTTP, 300
 HTTP request, 57
 Humidity, 120

I

Ifconfig, 42
 Importing, 54

Input nodes,	55	P	
ISM,	222	Parallel LCD,	137
J		Ping,	187
Jason,	72	Pitch,	232
Joystick,	233	PoE port,	16
L		Pressure,	242
Latitude,	208	Ps,	39
LCD,	113	POST,	300
LCD character set,	148	Publisher,	279
LED colours,	235	Push button,	106
LED matrix,	234	PUT,	300
Line chart,	156	Putty,	23
LM35DZ,	201	PWM,	110
Logic level converter,	217	R	
Longitude,	208	Random node,	121
M		Random number,	60
Map,	212	Raspberry Pi nodes,	58
Mark,	110	Raspbian Buster,	18
Mathematical functions,	313	Remote access,	22
MCP3002,	142	Repetition,	317
Mean,	67	RF radio,	222
Micro SD card,	17	Roll,	232
MOSFET,	216	Rotate screen,	243
Mosquitto,	280	S	
Motion events,	229	SCL,	113
MQTT,	278	Scrolling data,	242
MQTT in,	281	SDA,	113
MQTT out,	281	Send UDP,	178
Multiple GPIO,	98	Sense Hat,	225
Multiple gauge,	160	Sense Hat nodes,	226
Multiple inputs,	62	Serial communication,	198
Multiple LED,	173	Shutdown,	40
Multiple outputs,	65	Slider node,	161
N		Smooth node,	67
Ngrok,	269	Social nodes,	58
NodeMCU,	285	Space,	110
Node-RED configuration,	78	SPI,	143
O		SSH,	23
Openweathermap,	71, 91	Storage nodes,	58, 190
Orientation,	231	String manipulation,	310
Output nodes,	56	Subscriber,	279
		Switch node,	109
		Super user,	37
		Switch,	317

Switch node, 165

T

Talking weather forecast, 166
TCP, 170
Temperature conversion, 52
Text node, 165
TightVNC, 26
Timestamp, 190
TMP36, 146
Topics, 279
Traffic lights, 102
Trf click, 223
Trigger node, 86. 104
Twitter, 76
Twitter in, 76
Twitter out, 76

U

UDP, 170
UDP receive, 176
Ultrasonic, 129
Unit conversion, 62
URL, 301
USB keyboard, 17
USB port, 220
Utf-8, 195

V

Variables, 309
VNC, 25
VNC server, 25
Voltmeter, 144

W

Weather, 70
Web server, 301
Websocket, 56
While, 318
Whoami, 36
WiFi, 170
Wildcard, 33

Y

Yaw, 232

Programming with Node-RED

Dogan Ibrahim



Prof. Dr. Dogan Ibrahim is a Fellow of the Institution of Electrical Engineers. He is the author of over 60 technical books, published by publishers including Wiley, Butterworth, and Newnes. He is the author of over 250 technical papers, published in journals, and presented in seminars and conferences.

ISBN 978-1-907920-88-2



Elektor International Media BV
www.elektor.com

The Internet of Things (IoT) is becoming a major application area for embedded systems. As a result, more and more people are becoming interested in learning about embedded design and programming. Technical colleges and universities are moving away from legacy 8 and 16-bit microcontrollers and are introducing 32-bit embedded microcontrollers to their curriculums. Many IoT applications demand precision, high processing power, and low power consumption.

Produced by IBM, Node-RED is an open-source visual editor for wiring the Internet of Things. Node-RED comes with a large number of nodes to handle a multitude of tasks. The required nodes are selected and joined together to perform a particular task. Node-RED is based on flow type programming where nodes are configured and joined together to form an application program. There are nodes for performing complex tasks, including web access, Twitter, E-mail, HTTP, Bluetooth, MQTT, controlling GPIO ports, etc. One particularly nice aspect of NodeRED is that the programmer does not need to learn how to write complex programs. For example, an email can be sent by simply joining nodes together and writing only a few lines of code.

The aim of this book is to teach how Node-RED can be used in projects. The main hardware platform used with most of the projects in this book is Raspberry Pi 4. Chapters are included to show how Node-RED can be also be used with Arduino Uno, ESP32 DevKitC, and the ESP8266 NodeMCU microcontroller development boards.