

COURSEWARE

COURSEWARE BASED ON THE TOGAF® EA – FOUNDATION



Courseware based on
the TOGAF® EA – Foundation
Courseware

Colophon

Title: Courseware based on the TOGAF® EA – Foundation

Authors: Van Haren Learning Solutions A.O.

Contributors: Rajiv Dhir
David Gilmour
Katherine McGill
Maurits van der Plas

Reviewers: Adrian Mueller
Ali Ramadan
Andre Schrande
Ben Kalland
Bert Schaapsmeeders
Duncan Anderson
Martijn Bakker
Maarten Bordewijk
Patrick Derde
Raymond Slot
Rolf D. Henriksen
Steve Else

Publisher: Van Haren Publishing, 's-Hertogenbosch

ISBN Hard Copy: 9789401808897

Edition: First edition, first print, January 2023

Design: Van Haren Publishing, 's-Hertogenbosch

Copyright: © Van Haren Publishing 2023

For further information about Van Haren Publishing please e-mail us at: info@vanharen.net or visit our website: www.vanharen.net

All rights reserved.

No part of this publication may be reproduced, distributed, stored in a data processing system or Published in any form by print, photocopy or any other means whatsoever without the prior written Consent of the authors and publisher. This material contains diagrams and text Information based upon: TOGAF® is a TradeMark of The Open Group. ArchiMate®, DirecNet®, Jericho Forum®, Making Standards Work®, OpenPegasus®, The Open Group®, TOGAF®, and UNIX® are registered trademarks and Boundaryless Information Flow™, Dependability Through Assuredness™, FACE™, Open Platform 3.0™, and The Open Group Certification Mark™ are trademarks of The Open Group. BPMN™ and Business Process Modeling Notation™ are trademarks of the Object Management Group (OMG).

All other brand, company, and product names are used for identification purposes only and may be trademarks that are the sole property of their respective owners. In the event of any discrepancy between text in this Study Guide and the official TOGAF documentation, the TOGAF documentation remains the authoritative version for certification, testing by examination, and other purposes. The official TOGAF documentation can be obtained online at www.opengroup.org/togaf. All rights reserved. No part of this publication may be reproduced, distributed, stored in a data processing system or Published in any form by print, photocopy or any other means whatsoever without the prior written consent of the authors and publisher.

Publisher about the Courseware

The Courseware was created by experts from the industry who served as the author(s) for this publication. The input for the material is based on existing publications and the experience and expertise of the author(s). The material has been revised by trainers who also have experience working with the material. Close attention was also paid to the key learning points to ensure what needs to be mastered.

The objective of the courseware is to provide maximum support to the trainer and to the student, during his or her training. The material has a modular structure and according to the author(s) has the highest success rate should the student opt for examination. The Courseware is also accredited for this reason, wherever applicable.

In order to satisfy the requirements for accreditation the material must meet certain quality standards. The structure, the use of certain terms, diagrams and references are all part of this accreditation. Additionally, the material must be made available to each student in order to obtain full accreditation. To optimally support the trainer and the participant of the training assignments, practice exams and results are provided with the material.

Direct reference to advised literature is also regularly covered in the sheets so that students can find additional information concerning a particular topic. The decision to leave out notes pages from the Courseware was to encourage students to take notes throughout the material.

Although the courseware is complete, the possibility that the trainer deviates from the structure of the sheets or chooses to not refer to all the sheets or commands does exist. The student always has the possibility to cover these topics and go through them on their own time. It is recommended to follow the structure of the courseware and publications for maximum exam preparation.

The courseware and the recommended literature are the perfect combination to learn and understand the theory.

-- Van Haren Publishing

Other publications by Van Haren Publishing

Van Haren Publishing (VHP) specializes in titles on Best Practices, methods and standards within four domains:

- IT and IT Management
- Architecture (Enterprise and IT)
- Business Management and
- Project Management

Van Haren Publishing is also publishing on behalf of leading organizations and companies: ASLBiSL Foundation, BRMI, CA, Centre Henri Tudor, Gaming Works, IACCM, IAOP, IFDC, Innovation Value Institute, IPMA-NL, ITSqc, NAF, KNVI, PMI-NL, PON, The Open Group, The SOX Institute.

Topics are (per domain):

IT and IT Management

ABC of ICT
ASL®
CATS CM®
CMMI®
COBIT®
e-CF
ISO/IEC 20000
ISO/IEC 27001/27002
ISPL
IT4IT®
IT-CMF™
IT Service CMM
ITIL®
MOF
MSF
SABSA
SAF
SIAM™
TRIM
VeriSM™

Enterprise Architecture

ArchiMate®
GEA®
Novius Architectuur
Methode
TOGAF®

Business Management

BABOK® Guide
BiSL® and BiSL® Next
BRMBOK™
BTF
EFQM
eSCM
IACCM
ISA-95
ISO 9000/9001
OPBOK
SixSigma
SOX
SqEME®

Project Management

A4-Projectmanagement
DSDM/Atern
ICB / NCB
ISO 21500
MINCE®
M_o_R®
MSP®
P3O®
PMBOK® Guide
Praxis®
PRINCE2®

For the latest information on VHP publications, visit our website: www.vanharen.net.

Table of content

	<i>--- Slide number</i>	<i>--- Page number</i>
Reflection		10
Agenda		12
Module 00: Course Information	(1)	15
Course Module Index	(2)	16
Module Index	(3)	17
Instructor and Introductions	(4)	18
Venue Information	(5)	19
Course Notes	(9)	20
Recommendation	(10)	21
Module Structure	(11)	22
Slide Structure	(12)	23
Notes Structure	(13)	24
Index to Level 1	(20)	31
Module 01: Overview	(1)	37
Course Module Index	(2)	38
Module Index	(3)	39
Where did EA come from?	(4)	40
Why Enterprise Architecture?	(6)	42
Where did TOGAF® come from?	(9)	45
TOGAF® Training	(13)	49
What is an Enterprise?	(15)	51
What is an Architecture?	(18)	54
Purpose of Enterprise Architecture	(19)	55
Why Enterprise Architecture is needed?	(22)	58
Enabling Enterprise Agility	(23)	59
Benefits of having an Enterprise Architecture	(24)	60
TOGAF as a framework	(26)	62
Enterprise Agility	(27)	63
Architecture Domains	(29)	65
Architecture abstraction	(31)	67
Enterprise Continuum	(32)	68
Architecture Repository	(34)	70
The TOGAF Content Framework	(36)	72

The Enterprise Metamodel	(37)	73
Summary of Module	(39)	75
Module 02: Implementation Support Techniques	(1)	77
Course Module Index	(2)	78
Module Index	(3)	79
Recap the TOGAF metamodel	(4)	80
Architecture Capability	(5)	81
Risk Management	(10)	86
Risk and Security	(15)	91
Gap Analysis	(16)	92
Definitions	(20)	96
The Architecture Development Method	(27)	103
The iterative approach of the ADM	(33)	109
Govern the maintenance of EA	(36)	112
Summary of Module	(37)	113
Module 03: Introduction to the ADM - Techniques	(1)	115
Course Module Index	(2)	116
Module Index	(3)	117
Govern the creation development	(4)	118
Scope an Architecture	(7)	121
Architecture alternatives	(9)	123
Preliminary Phase	(10)	124
Phase A	(13)	127
The Architecture Phases	(17)	131
Phase B	(18)	132
Phase C	(21)	135
Phase D	(24)	138
The Architecture Phases of the ADM	(27)	141
Summary of Module 03	(28)	142
Module 04: An Introduction to the ADM	(1)	144
Course Module Index	(2)	145
Module Index	(3)	146
The Realization Phases	(4)	147
Phase E	(5)	148
Phase F	(8)	151
Phase G	(11)	154

The Maintenance Phases	(14)	157
Phase H	(15)	158
Requirements Management	(19)	161
Information Flow	(22)	165
Architecture in an Agile Enterprise	(23)	166
Supporting Guidelines and Techniques	(24)	167
Summary of Module 04	(25)	168
Module 05: Applying ADM	(1)	170
Course Module Index	(2)	171
Module Index	(3)	172
Context of Governance	(4)	173
EA Principles	(6)	175
The Business Scenario method	(12)	181
Gaps	(13)	182
Interoperability	(14)	183
Business Transformation Readiness Assessment	(16)	185
Characteristics of Architecture Risk Management	(19)	188
How to apply the TOGAF Standard – Guidance	(24)	193
How iteration within the ADM enables concurrency	(25)	194
Architecture Landscape – Levels	(27)	196
Architecture Landscape – Partitions	(28)	197
Architecture Landscape – Purpose	(29)	198
Support the Digital enterprise	(30)	199
Architecture Governance	(31)	200
Summary of Module 5	(34)	203
Module 06: Architecture Module Governance	(1)	205
Course Module Index	(2)	206
Module Index	(3)	207
Architecture Governance Framework	(4)	208
Architecture Governance Strategy	(7)	211
Architecture Board	(8)	212
Trade-Off Decisions	(10)	214
Architecture Contracts	(11)	215
Architecture Compliance	(14)	218
Formal Relationships	(15)	219
Building Blocks	(18)	222

Architecture Building Blocks	(20)	224
Solution Building Blocks	(21)	225
Summary of Module 06	(22)	226
Module 07: Architecture Content	(1)	228
Course Module Index	(2)	229
Module Index	(3)	230
TOGAF - Deliverables	(4)	231
TOGAF® - ADM Inputs and Outputs	(5)	232
TOGAF - Key ADM Deliverables	(6)	233
Architecture Definition Doc	(9)	236
Architecture Requirements Specification	(10)	237
Architecture Principles	(11)	238
Architecture Roadmap	(12)	239
Architecture Vision	(14)	241
Business Principles, Business Goals, and Business Drivers	(15)	242
Capability Assessment	(16)	243
Change Request	(18)	245
Communications Plan	(19)	246
Compliance Assessment	(20)	247
Migration Plan	(21)	248
Governance Model	(22)	249
Request for Architecture Work	(23)	250
Requirements Impact Assessment	(24)	251
Statement of Architecture Work	(25)	252
Summary of Module 07	(26)	253
Practice Exams		
TOGAF® EA Part 1 - Practice Test Question Book		255
TOGAF® EA Part 1 - Practice Test Answer Book		272
TOGAF® Certification Program Conformance Requirements		284

Self-Reflection of understanding Diagram

‘What you do not measure, you cannot control.’ – Tom Peters

Fill in this diagram to self-evaluate your understanding of the material. This is an evaluation of how well you know the material and how well you understand it. In order to pass the exam successfully you should be aiming to reach the higher end of Level 3. If you really want to become a pro, then you should be aiming for Level 4. Your overall level of understanding will naturally follow the learning curve. So, it’s important to keep track of where you are at each point of the training and address any areas of difficulty.

Based on where you are within the Self-Reflection of Understanding diagram you can evaluate the progress of your own training.

<i>Level of Understanding</i>	<i>Before Training (Pre-knowledge)</i>	<i>Training Part 1 (1st Half)</i>	<i>Training Part 2 (2nd Half)</i>	<i>After studying / reading the book</i>	<i>After exercises and the Practice exam</i>
<i>Level 4 I can explain the content and apply it .</i>					
<i>Level 3 I get it! I am right where I am supposed to be.</i>					<i>Ready for the exam!</i>
<i>Level 2 I almost have it but could use more practice.</i>					
<i>Level 1 I am learning but don’t quite get it yet.</i>					

(Self-Reflection of Understanding Diagram)

Write down the problem areas that you are still having difficulty with so that you can consolidate them yourself, or with your trainer. After you have had a look at these, then you should evaluate to see if you now have a better understanding of where you actually are on the learning curve.

Troubleshooting

Problem areas:

Topic:

Part 1

Part 2

You have gone through the book and studied.

You have answered the questions and done the practice exam.

Timetable

This is a schedule for a two day course – approximate timings:

Day 1	Day 2
8:00 Module 00	8:00 Module 09
8:30 Module 01	8:30 Module 10
9:00 Module 02	9:00 Module 11
10:00 Module 03	10:00 Module 12
11:00 Module 04	11:00 Module 13
<i>12:00 Lunch</i>	<i>12:00 Lunch</i>
13:30 Module 05	13:30 Module 14
15:00 Module 06	15:00 Module 15
16:30 Module 07	16:30 Module 16
18:00 End of day	18:00 End of day

This is a schedule for a three day course – approximate timings:

Day 1	Day 2	Day 3
8:00 Module 00	8:00 Module 06	8:00 Module 12
8:30 Module 01	9:30 Module 07	9:30 Module 13
10:00 Module 02	<i>11:00 Lunch</i>	<i>11:00 Lunch</i>
<i>11:30 Lunch</i>	12:30 Module 08	12:30 Module 14
13:00 Module 03	14:00 Module 09	14:00 Module 15
14:30 Module 04	15:00 Module 10	15:00 Module 16
16:00 Module 05	16:00 Module 11	16:00 End of day
17:30 End of day	17:00 End of day	

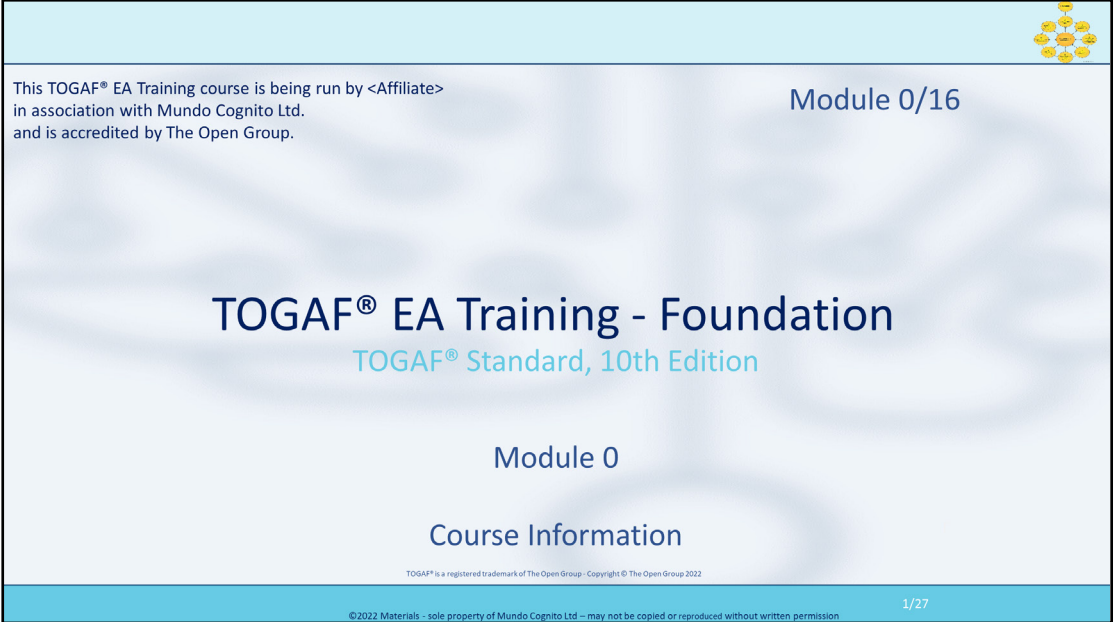
This is a schedule for a four day course – approximate timings:

Day 1	Day 3
8:00 Module 00	8:00 Module 11
8: 30 Module 01	10:00 Module 12
10:15 Module 02	<i>11:00 Lunch</i>
<i>12:00 Lunch</i>	12:30 Module 13
13:30 Module 04	14:00 Module 14
15:15 Module 05	15:30 Module 15
17:30 End of day	17:00 End of day

Day 2	Day 4
8:00 Module 06	8:00 Module 16
10:00 Module 07	9:30 Revision/Study
<i>11:00 Lunch</i>	<i>11:00 Lunch</i>
12:30 Module 08	12:30 Case Study end
15:30 Module 10	17:00 End of day
17:00 End of day	

Modules Level 1:

- 00 - Course Information
 - 01 - Overview
 - 02 - Implementation Support Techniques
 - 03 - Introduction to the ADM - Techniques
 - 04 - An Introduction to the ADM
 - 05 – Applying ADM
 - 06 - Architecture Governance
 - 07 – Architecture Content



This TOGAF® EA Training course is being run by <Affiliate> in association with Mundo Cognito Ltd. and is accredited by The Open Group.

Module 0/16

TOGAF® EA Training - Foundation

TOGAF® Standard, 10th Edition

Module 0

Course Information

TOGAF® is a registered trademark of The Open Group. Copyright © The Open Group 2022

©2022 Materials – sole property of Mundo Cognito Ltd – may not be copied or reproduced without written permission


1/27

Notes:

This slides shows a start-off module slide. Kicking-off each new module.

Modules Level 1:

- 00 - Course Information
 - 01 - Overview
 - 02 - Implementation Support Techniques
 - 03 - Introduction to the ADM - Techniques
 - 04 - An Introduction to the ADM
 - 05 – Applying ADM
 - 06 - Architecture Governance
 - 07 – Architecture Content

Course Module Index	
	# Topic – Level 1 ✓
	1 Module 00 - Course Introduction
	2 Module 01 - Overview
	3 Module 02 - Concepts
	4 Module 03 - Introduction to the ADM
	5 Module 04 - Introduction to the ADM - Techniques
	6 Module 05 – Applying ADM
	7 Module 06 - Architecture Governance
	8 Module 07 – Architecture Content
# Topic – Level 2	
9 Module 00 - Course Introduction	
10 Module 08 - The Context for Enterprise Architecture	
11 Module 09 – Stakeholder Management	
12 Module 10 – Phase A	
13 Module 11 – Architecture Development	
14 Module 12 – Implementing the Architecture	
15 Module 13 – Architecture Change Management	
16 Module 14 – Requirements Management	
17 Module 15 – Supporting the ADM Work	
18 Module 16 – Closure	

©2022 Materials - sole property of Mundo Cognito Ltd - may not be copied or reproduced without written permission

2/27

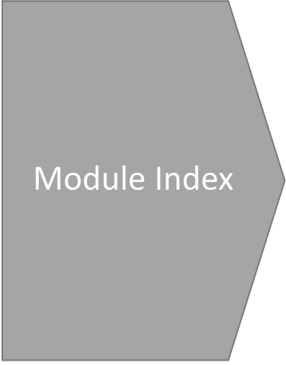
Notes:

Here you can see all the modules that are in the course. The lowest checkmark indicates the topic that is currently being addressed. All the checkmarks modules above will have already been previously discussed.

Modules Level 1:

- 00 - Course Information
 - 01 - Overview
 - 02 - Implementation Support Techniques
 - 03 - Introduction to the ADM - Techniques
 - 04 - An Introduction to the ADM
 - 05 – Applying ADM
 - 06 - Architecture Governance
 - 07 – Architecture Content

Module Index



#	Topic	Page No.
1	Module Title	1
2	Course Module Index	2
3	Module Index	3
4	Instructor and Introduction	4
5	Venue Information	5
6	Schedule	6
7	Course Notes	9
8	Recommendation	10
9	Module Structure	11
10	Slide Structure	12
11	Notes Structure	13
12	Index to Module 1	20

©2022 Materials - sole property of Mundo Cognito Ltd - may not be copied or reproduced without written permission

3/27

Notes:

This slides shows the submodules within this module. Every module will have a slide that will show what submodules are included.

Modules Level 1:

- 00 - Course Information

- 01 - Overview

- 02 - Implementation Support Techniques


- 03 - Introduction to the ADM - Techniques


- 04 - An Introduction to the ADM

- 05 – Applying ADM

- 06 - Architecture Governance

- 07 – Architecture Content

Instructor and Introductions 



Our coming days

- ✓ Active participation!
- ✓ Ask questions
- ✓ Theory (a lot)
- ✓ Some homework
- ✓ Group dialogues


©2022 Materials - sole property of Mundo Cognito Ltd - may not be copied or reproduced without written permission 4/74

Notes:


Modules Level 1:

- 00 - Course Information
 - 01 - Overview
 - 02 - Implementation Support Techniques
 - 03 - Introduction to the ADM - Techniques
 - 04 - An Introduction to the ADM
 - 05 – Applying ADM
 - 06 - Architecture Governance
 - 07 – Architecture Content

Venue Information



Our coming days



- ✓ Safety
- ✓ Breaks
- ✓ Lunch
- ✓ Exercises
- ✓ Phones/Computers

©2022 Materials - sole property of Mundo Cognito Ltd - may not be copied or reproduced without written permission5/27

Notes:

Modules Level 1:

- 00 - Course Information
 - 01 - Overview
 - 02 - Implementation Support Techniques
 - 03 - Introduction to the ADM - Techniques
 - 04 - An Introduction to the ADM
 - 05 – Applying ADM
 - 06 - Architecture Governance
 - 07 – Architecture Content

Course Notes 👤👤👤👤

<https://publications.opengroup.org/togaf-library>

Fundamental content



Home > TOGAF® Library

TOGAF® Library

Quick Links: Browse by Document Type

- The TOGAF Standard
- TOGAF Translation Glossaries
- TOGAF Series Guides
- TOGAF Study Guides
- TOGAF White Papers
- TOGAF Webinars
- TOGAF Reference Cards

Series guides



Reference to the documentation relevant to a slide is shown here

Series Guide: Business Capabilities, Version 2 : Page 9 : §1.2

©2022 Materials - sole property of Mundo Cognito Ltd - may not be copied or reproduced without written permission

9/27

Notes:

Level=1 : L.O.= 1.10c : Briefly explain what an Architecture Capability is.
 See : TOGAF® Series Guide: A Practitioners' Approach to Developing Enterprise Architecture Following the TOGAF® ADM : Page 9 : §3.3

Official publisher: www.vanharen.store


You may download the TOGAF® Standard, 10th Edition under a, personal, 90-day Evaluation License from <https://publications.opengroup.org/c220>
 you may then go on to use it according to their terms and conditions.

Annual Commercial License

If you wish to use the TOGAF® Standard, 10th Edition for commercial purposes, then your organization must have a current TOGAF® Standard, 10th Edition Annual Commercial License. This applies to both members and non-members of The Open Group Architecture Forum.

Modules Level 1:

- 00 - Course Information
- 01 - Overview
- 02 - Implementation Support Techniques
- 03 - Introduction to the ADM - Techniques
- 04 - An Introduction to the ADM
- 05 – Applying ADM
- 06 - Architecture Governance
- 07 – Architecture Content



Recommendation

1

Create Account

Please fill out the following information to create your account. You must have an account with The Open Group if you are:

- Registering as part of an organization that is a Member of The Open Group and to take part in forums, consortia and workgroups. You must enter a Business Email. We will inform you ahead of upcoming webinars.
- Registering for an exam, certification; your name and address must match your ID.
- Registering for an event, webinar, or publications.


Fields marked with asterisks are required

First/ Given Name *	Middle Name/ Initials	Last Name/ Family Name *
Business / Primary Email (domain must match Member organization to receive entitlements) *		

<https://publications.opengroup.org/registration-help>

When/if doing the Learning Studies in the Practitioner course, The Open Group account **Individual ID** is needed. So make an account prior.

2



<https://publications.opengroup.org/i220>

Go to **this link** and press 'Be the first to review this product' and follow the steps, and download the the TOGAF Standard.

©2022 Materials – sole property of Mundo Cognito Ltd – may not be copied or reproduced without written permission 10/27

Notes:

Modules Level 1:

- 00 - Course Information
 - 01 - Overview
 - 02 - Implementation Support Techniques
 - 03 - Introduction to the ADM - Techniques
 - 04 - An Introduction to the ADM
 - 05 – Applying ADM
 - 06 - Architecture Governance
 - 07 – Architecture Content

Module Structure

Each Module has the same structure

3 – Introductory slides

n – Content slides

2 – Termination slides*

The screenshot shows a presentation interface with three main slides visible:

- Course Module Index / Module Index:** A table listing modules and their details.
- Schedule:** A slide titled "This is a 4 day course - approximate timings" showing a daily schedule for Day 1, Day 2, Day 3, and Day 4.
- End of Module #00/17:** A slide indicating the end of the module.

*second last slide is blank, for future use, do NOT delete

©2022 Materials - sole property of Mundo Cognito Ltd - may not be copied or reproduced without written permission 11/27

Notes:

This slide shows (especially for the trainer) how they can navigate the content during the training.

But also how the training has been constructed in a modular fashion.

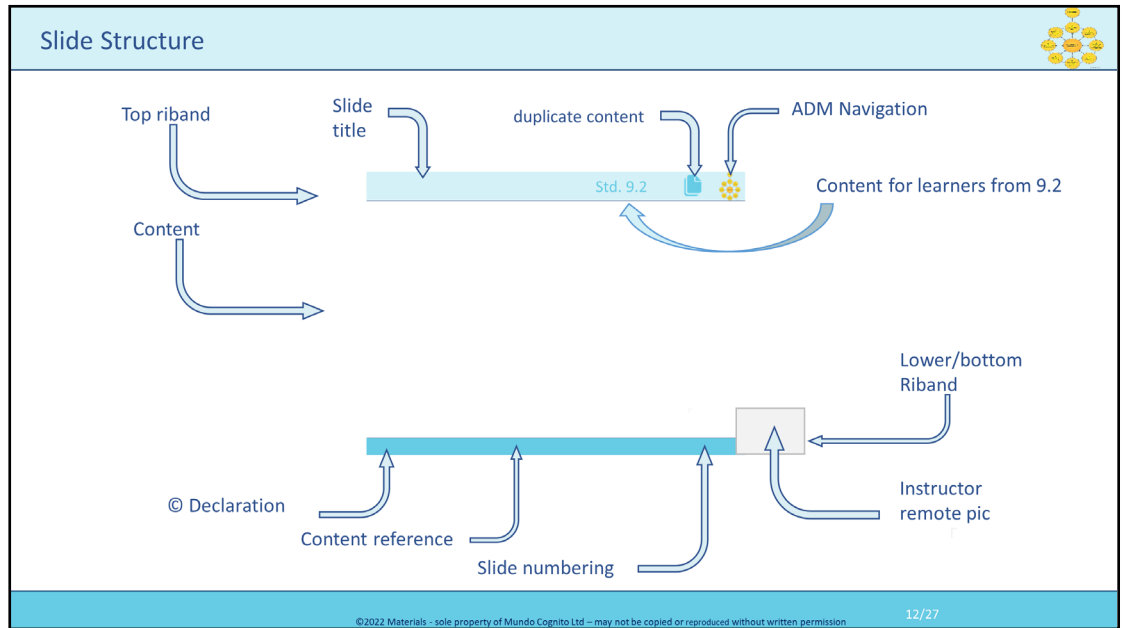
Additionally, in the presentation there is the core content. Additional content such as examples, (mini) case-studies, multiple-choice questions and open questions are included for the delegates.

These are also available in the presentation but are not included as standard.

This is done so that the trainer can determine when to leverage these additional materials.

Modules Level 1:

- 00 - Course Information
 - 01 - Overview
 - 02 - Implementation Support Techniques
 - 03 - Introduction to the ADM - Techniques
 - 04 - An Introduction to the ADM
 - 05 – Applying ADM
 - 06 - Architecture Governance
 - 07 – Architecture Content

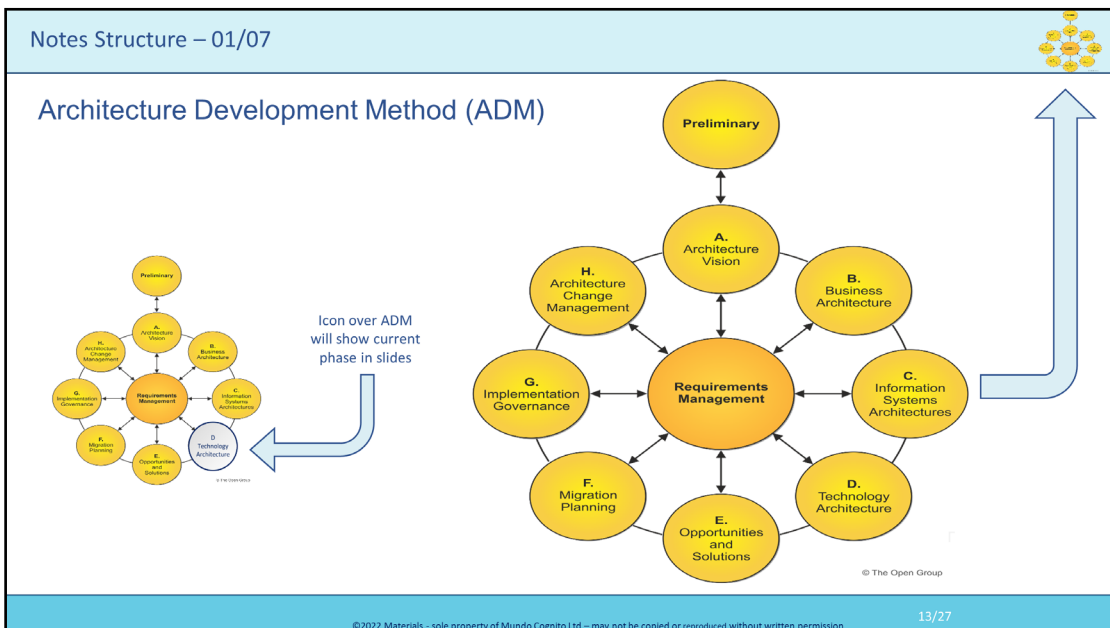


Notes:

This slide illustrates the various functions of a slide.

Modules Level 1:

- 00 - Course Information
 - 01 - Overview
 - 02 - Implementation Support Techniques
 - 03 - Introduction to the ADM - Techniques
 - 04 - An Introduction to the ADM
 - 05 - Applying ADM
 - 06 - Architecture Governance
 - 07 - Architecture Content



Notes:

Modules Level 1:

- 00 - Course Information
 - 01 - Overview
 - 02 - Implementation Support Techniques
 - 03 - Introduction to the ADM - Techniques
 - 04 - An Introduction to the ADM
 - 05 – Applying ADM
 - 06 - Architecture Governance
 - 07 – Architecture Content

Notes Structure – 03/07

Course Notes
Are provided to students in two forms:
1. As a printed booklet
2. Via an URL
In both cases the format is:

Modules
Space to make notes
Slide notes expand the topic and give text from § of the relevant document

Fast-forward to (sub-) module

For the Trainer
The Module Index enables fast-forward navigation to related modules via direct links (presentation view).

For the Candidate
Go to Bookmarks (open in Adobe Reader or Adobe DC) to fast-forward within the PDF material.

Internal link to Sub-Modules In PowerPoint

Bookmark tab.

Select relevant bookmark

©2022 Materials – sole property of Mundo Cognito Ltd – may not be copied or reproduced without written permission

15/27


Notes:

The courseware presents one slide per page, including any associated notes.

Modules Level 1:

- 00 - Course Information
 - 01 - Overview
 - 02 - Implementation Support Techniques
 - 03 - Introduction to the ADM - Techniques
 - 04 - An Introduction to the ADM
 - 05 – Applying ADM
 - 06 - Architecture Governance
 - 07 – Architecture Content

Notes Structure – 04/07

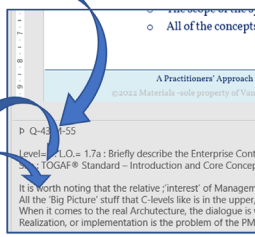


The Notes have a 'fixed' structure.

Block 0 = Line 1 if present, contains Navigation indication, as described elsewhere.
The 'flag' that it is Navigation is the 1st character is a thorn [p].

Block 1 = if present, gives full detail of the KLP that is the subject matter of the Slide.

Block 2 = if present – various notes, aide memoires of interesting things to enliven the dreariness ... followed by text from the 'standard', up to a point.



The screenshot shows a slide with a navigation menu at the top, a title, and a main content area. Three blue curved arrows point from the text descriptions to the corresponding parts of the slide: one to the navigation menu (Block 0), one to the main content area (Block 1), and one to a note area at the bottom (Block 2).

16/27


©2022 Materials - sole property of Mundo Cognito Ltd - may not be copied or reproduced without written permission

Notes:

Modules Level 1:

- 00 - Course Information
 - 01 - Overview
 - 02 - Implementation Support Techniques
 - 03 - Introduction to the ADM - Techniques
 - 04 - An Introduction to the ADM
 - 05 – Applying ADM
 - 06 - Architecture Governance
 - 07 – Architecture Content

Notes Structure – 05/07



These are made available to the students as printed manual or as pdf version via URL to .pdf if The Open Group® gives permission.
NOTE:
 The Instructor **MUST** check that all students have access to these materials in one or other form. If access is not available the instructor **MUST** liaise with the appropriate source to enable access throughout the course.

L.O./KLP source shown on each slide

Introduction and Core Concepts - Page 2 : §1.1

©2012 Materials - sole property of Van Haren Learning - may not be copied or reproduced without written permission

19/40

P: S-47 M-50

Level=1 : L.O.= 1.2a : Explain the purpose of EnterpriseArchitecture.
 See : TOGAF® Standard – Introduction and Core Concepts : Page 2 : § 1.1

L.O./KLP + source shown on each Notes

Level=1 : L.O.= 1.2a : Explain the purpose of EnterpriseArchitecture.

- Level – which Exam Level
- L.O. = Learning Outcome
- : Description of Learning Outcome from TOG checklist

See : TOGAF® Standard – Introduction and Core Concepts : Page 2 : §1.1

- Exact reference : Volume/book : Page Nr. In book : Paragraph in book

Open Group L.O. specification

6.3	Briefly explain the role of an Architecture Board and its responsibilities.	Understanding	(S5) §4.1.4.2				
			G186 18.2				

Slide planner

6.3.a	Briefly explain the r	(S5)	§4.1	21
6.3.b	Briefly explain the r	(S5)	§4.2	21
6.3.c	Briefly explain the r	G186	§6.2	56

©2022 Materials - sole property of Mundo Cognito Ltd - may not be copied or reproduced without written permission

17/27

Notes:

Modules Level 1:

- 00 - Course Information
 - 01 - Overview
 - 02 - Implementation Support Techniques
 - 03 - Introduction to the ADM - Techniques
 - 04 - An Introduction to the ADM
 - 05 – Applying ADM
 - 06 - Architecture Governance
 - 07 – Architecture Content

Notes Structure – 06/07

The name given in the Reference is the same as the Name of the Title of the volume.
This is to enable you to locate the correct Volume to look up the reference.

The slide shows a reference box with the following text: "Introduction and Core Concepts Page 2 : §1.1 39/40 ©2012 Materials - sole property of Van Haren Learning BV - may not be copied or reproduced without written permission p. 5-47 M-50 Level=1; L.O.= 1.2a: Explain the purpose of EnterpriseArchitecture. See: TOGAF® Standard - Introduction and Core Concepts : Page 2 : §1.1". A callout box contains the following text: "Level=1 : L.O.= 1.2a : Explain the purpose of EnterpriseArchitecture. ○ Level - which Exam Level ○ L.O. = Learning Outcome ○ : Description of Learning Outcome from TOG checklist See : TOGAF® Standard - Introduction and Core Concepts : Page 2 : §1.1 ○ Exact reference : Volume/book : Page Nr. in book : Paragraph in book". To the right is the cover of "The TOGAF® Standard 10th Edition Introduction and Core Concepts". The bottom of the slide has a footer: "©2022 Materials - sole property of Mundo Cognito Ltd - may not be copied or reproduced without written permission 18/27".

Notes: The courseware presents one slide per page, including any associated notes.

Modules Level 1:

- 00 - Course Information
- 01 - Overview
- 02 - Implementation Support Techniques
- 03 - Introduction to the ADM - Techniques
- 04 - An Introduction to the ADM
- 05 – Applying ADM
- 06 - Architecture Governance
- 07 – Architecture Content

Notes Structure – 07/07

The Page number is normally on the outside of the page at the bottom and the Page number in the Volume should correspond to the Page Number in the Reference

The Paragraph number, indicated in the Reference with the Unicode Section symbol (§), corresponds to the Paragraph number in the Volume .

Introduction and Core Concepts : Page 2 : §1.1 19/40

©2022 Materials - sole property of Van Haren Learning BV – may not be copied or reproduced without written permission

p 5-47 M-50

Level=1 : L.O.= 1.2a : Explain the purpose of EnterpriseArchitecture.
See : TOGAF® Standard – Introduction and Core Concepts : Page 2 : §1.1

Level=1 : L.O.= 1.2a : Explain the purpose of Enterprise Architecture.

- Level – which Exam Level
- L.O. = Learning Outcome
- : Description of Learning Outcome from TOG checklist

See : TOGAF® Standard – Introduction and Core Concepts : Page 2 : §1.1

- Exact reference : Volume/book : Page Nr. in book : Paragraph in book

Executive Overview

1.1 Executive Overview

This section provides an executive overview of Enterprise Architecture, the basic concepts of what it is and what it can do for the organization, and why it is needed. It provides a summary of the benefits of establishing an Enterprise Architecture and adopting the TOGAF approach to achieve that.

What is an enterprise?

The TOGAF Standard considers an "enterprise" to be any collection of organizations that have common goals.

For example, an enterprise could be:

- A whole corporation or a division of a corporation.
- A government agency or a single government department.
- A chain of geographically diverse organizations linked together by common ownership.
- Groups of countries, governments, or governmental organizations (such as enterprises working together to create common or shareable deliverables or infrastructures).
- Partnerships and alliances of businesses working together, such as a consortium or supply chain.

The term "enterprise" in the context of "Enterprise Architecture" can be applied to either an entire enterprise, encompassing all of its business activities and capabilities, information, and technology that make up the entire infrastructure and governance of the enterprise, or to one or more specific areas of interest within the enterprise. An enterprise may include partners, suppliers, and customers as well as internal business units. In all cases, the architecture crosses multiple systems, and multiple functional groups within the enterprise.

The enterprise operating model concept is used to determine the nature and scope of the Enterprise Architecture within an organization. Many organizations may comprise multiple enterprises, and may operate and function as a number of independent Enterprise Architectures to address each one. These enterprises often have much in common with each other, including processes, functions, and their information systems, and there is always the potential for wider goals in the use of a common architecture framework. The available common framework can provide a basis for the development of common building blocks and solutions, and a shareable Architecture Repository for the integration and reuse of business models, strategic information, and data.

Why is an Enterprise Architecture needed?

The purpose of Enterprise Architecture is to organize across the enterprise the often fragmented supply of processes (both manual and automated) into an integrated environment that is responsive to change and supportive of the delivery of the business strategy.

The effective management and exploitation of information and Digital Transformation are key factors to business success, and indispensable means to achieving competitive advantage. An Enterprise Architecture addresses this need, by providing a strategic context for the evolution and reuse of digital capabilities in response to the rapidly changing needs of the business environment.

Furthermore, a good Enterprise Architecture enables you to achieve the right balance between business transformation and continuous operational efficiency. It allows individual business units

The Open Group Members (2022)

19/27

©2022 Materials - sole property of Mundo Cognito Ltd – may not be copied or reproduced without written permission

Notes:

The courseware presents one slide per page, including any associated notes.

Modules Level 1:

- 00 - Course Information

- 01 - Overview

- 02 - Implementation Support Techniques

- 03 - Introduction to the ADM - Techniques

- 04 - An Introduction to the ADM

- 05 – Applying ADM

- 06 - Architecture Governance

- 07 – Architecture Content

Index to Level 1 – Foundation Slides 01/06					
LO	Learning Outcome Text	M-Module S-Slide	TOGAF® Volume Name	Reference in	
				Volume	Volume type
1.1	Describe what an enterprise is.	M-1-S-15/17	Introduction and Core Concepts	P-2-§1.1	Fun Cont
1.2	Explain the purpose of Enterprise Architecture.	M-1-S-19/20	Introduction and Core Concepts	P-2-§1.1	Fun Cont
		M-1-S-21	A Practitioner's Approach to Developing Enterprise Architecture Following the ADM	P-8-§3.1	Series Guide
		M-1-S-22	Enabling Enterprise Agility	P-9-§1.2	Series Guide
1.3	List the key benefits of having an Enterprise Architecture.	M-1-S-24	Introduction and Core Concepts	P-2-§1.1	Fun Cont
		M-1-S-25	The TOGAF Leader's Guide to Establishing and Evolving an EA Capability	P-12-§3.6	Series Guide
1.4	Explain why the TOGAF Standard is suitable for use as a framework for Enterprise Architecture.	M-1-S-26	Introduction and Core Concepts	P-2-§1.1	Fun Cont
		M-1-S-27	Enabling Enterprise Agility	P-9-§1.2	Series Guide
		M-1-S-28	Enabling Enterprise Agility	P-10-§1.3	Series Guide
1.5	List the four architecture domains that are commonly accepted as subsets of an overall Enterprise Architecture and which the TOGAF Standard supports.	M-1-S-29/30	Introduction and Core Concepts	P-15-§3.3	Fun Cont
1.6	Briefly describe how architecture abstraction can be used in Enterprise Architecture.	M-1-S-31	Introduction and Core Concepts	P-23-§3.7	Fun Cont
1.7	Briefly describe the Enterprise Continuum.	M-1-S-32	Introduction and Core Concepts	P-26-§3.10	Fun Cont
		M-1-S-33	Architecture Content	P-85-§6.2	Fun Cont
1.8	Briefly explain the Architecture Repository.	M-1-S-34	Introduction and Core Concepts	P-27-§3.11	Fun Cont
		M-1-S-35	A Practitioner's Approach to Developing Enterprise Architecture Following the ADM	P-28-§5.1	Series Guide
1.9	Briefly explain the TOGAF Content Framework and Enterprise Metamodel.	M-1-S-36	Introduction and Core Concepts	P-29-§3.12	Fun Cont
		M-1-S-37/38	The TOGAF Leader's Guide to Establishing and Evolving an EA Capability	P-54-§8.3	Series Guide
1.10	Briefly explain what an Architecture Capability is.	M-2-S-5/6	Introduction and Core Concepts	P-33-§3.13	Fun Cont
		M-2-S-7	Introduction and Core Concepts	P-34-§3.14	Fun Cont
		M-2-S-8	The TOGAF Leader's Guide to Establishing and Evolving an EA Capability	P-9-§3.3	Series Guide
		M-2-S-9	The TOGAF Leader's Guide to Establishing and Evolving an EA Capability	P-30-§5.1	Series Guide
1.11	Briefly explain risk management.	M-2-S-10/14	ADM Techniques	P-67-§9	Fun Cont
		M-2-S-15	Integrating Risk and Security within an Enterprise Architecture	P-9-§3.1.1	Series Guide
1.12	Briefly explain gap analysis.	M-2-S-16/18	ADM Techniques	P-45-§5	Fun Cont
		M-2-S-19	A Practitioner's Approach to Developing Enterprise Architecture Following the ADM	P-114-§15.2.3	Series Guide

©2022 Materials - sole property of Mundo Cognito Ltd - may not be copied or reproduced without written permission

Notes:

Modules Level 1:

- 00 - Course Information

- 01 - Overview

- 02 - Implementation Support Techniques

- 03 - Introduction to the ADM - Techniques

- 04 - An Introduction to the ADM

- 05 – Applying ADM

- 06 - Architecture Governance

- 07 – Architecture Content

Index to Level 1 – Foundation Slides 02/06



Guidance from The Open Group advises that the Series Guides and the Fundamental Content make up the Body of Knowledge. Use of 'Standard' is inaccurate. Both elements constitute the Standard and are referred to as the Bok. In the list below, Book Titles that have 'Standard' printed on the cover are thus referred to as Fundamental Content – abbreviated to Fun Cont.

LO	Learning Outcome Text	M-Module S-Slide	TOGAF® Volume Name	Reference in Volume	Volume type
2.1	Define the following concepts: Application Architecture	M-2-S-20	Introduction and Core Concepts	P-41-§4.3	Fun Cont
	Define the following concepts: Architecture Landscape	M-2-S-20	Introduction and Core Concepts	P-43-§4.15	Fun Cont
	Define the following concepts: Architecture Model	M-2-S-20	Introduction and Core Concepts	P-44-§4.17	Fun Cont
	Define the following concepts: Artifact	M-2-S-20	Introduction and Core Concepts	P-45-§4.23	Fun Cont
	Define the following concepts: Business Architecture	M-2-S-21	Introduction and Core Concepts	P-46-§4.27	Fun Cont
	Define the following concepts: Business Model	M-2-S-21	Introduction and Core Concepts	P-46-§4.31	Fun Cont
	Define the following concepts: Capability	M-2-S-21	Introduction and Core Concepts	P-46-§4.33	Fun Cont
	Define the following concepts: Capability Architecture	M-2-S-22	Introduction and Core Concepts	P-47-§4.34	Fun Cont
	Define the following concepts: Data Architecture	M-2-S-22	Introduction and Core Concepts	P-47-§4.39	Fun Cont
	Define the following concepts: Deliverable	M-2-S-22	Introduction and Core Concepts	P-48-§4.40	Fun Cont
	Define the following concepts: Gap	M-2-S-23	Introduction and Core Concepts	P-49-§4.47	Fun Cont
	Define the following concepts: Metamodel	M-2-S-23	Introduction and Core Concepts	P-49-§4.54	Fun Cont
	Define the following concepts: Modelling	M-2-S-23	Introduction and Core Concepts	P-50-§4.56	Fun Cont
	Define the following concepts: Requirement	M-2-S-24	Introduction and Core Concepts	P-51-§4.64	Fun Cont
	Define the following concepts: Role	M-2-S-24	Introduction and Core Concepts	P-51-§4.66	Fun Cont
	Define the following concepts: Segment Architecture	M-2-S-24	Introduction and Core Concepts	P-51-§4.67	Fun Cont
	Define the following concepts: Stakeholder	M-2-S-25	Introduction and Core Concepts	P-53-§4.75	Fun Cont
	Define the following concepts: Strategic Architecture	M-2-S-25	Introduction and Core Concepts	P-53-§4.77	Fun Cont
	Define the following concepts: Technology Architecture	M-2-S-25	Introduction and Core Concepts	P-53-§4.80	Fun Cont
	Define the following concepts: Transition Architecture	M-2-S-26	Introduction and Core Concepts	P-54-§4.83	Fun Cont
	Define the following concepts: Work Package	M-2-S-26	Introduction and Core Concepts	P-54-§4.88	Fun Cont
3.1	Briefly describe the ADM and its phases.	M-2-S-27/30	Introduction and Core Concepts	P-16-§3.4	Fun Cont
	Briefly describe the ADM and its phases.	M-2-S-31	Architecture Development Method	P-3-§1.2.2	Fun Cont
3.2	Describe the difference between "draft" and "approved" deliverables.	M-2-S-32	Architecture Development Method	P-3-§1.2.2	Fun Cont
3.3	Explain the iterative approach of the ADM.	M-2-S-33	Architecture Development Method	P-5-§1.3	Fun Cont
		M-2-S-34	A Practitioners' Approach to Developing Enterprise Architecture Following the ADM	P-40-§5.2	Series Guide
		M-2-S-35	A Practitioners' Approach to Developing Enterprise Architecture Following the ADM	P-51-§5.2.3	Series Guide

Notes:

Modules Level 1:

- 00 - Course Information

- 01 - Overview

- 02 - Implementation Support Techniques

- 03 - Introduction to the ADM - Techniques

- 04 - An Introduction to the ADM

- 05 – Applying ADM

- 06 - Architecture Governance

- 07 – Architecture Content

Index to Level 1 – Foundation Slides 03/06



Guidance from The Open Group advises that the Series Guides and the Fundamental Content make up the Body of Knowledge. Use of 'Standard' is inaccurate. Both elements constitute the Standard and are referred to as the BoK. In the list below, Book Titles that have 'Standard' printed on the cover are thus referred to as Fundamental Content – abbreviated to Fun Cont.

LO	Learning Outcome Text	M-Module S-Slide	TOGAF® Volume Name	Reference in Volume	Volume type
3.4	Explain the need to govern the creation development and maintenance of Enterprise Architecture.	M-2-S-36	Architecture Development Method	P-7-\$1.4	Fun Cont
		M-3-S-4	A Practitioners' Approach to Developing Enterprise Architecture Following the ADM	P-108-\$15.1.1	Series Guide
		M-3-S-5	A Practitioners' Approach to Developing Enterprise Architecture Following the ADM	P-109-\$15.1.2	Series Guide
		M-3-S-6	A Practitioners' Approach to Developing Enterprise Architecture Following the ADM	P-110-\$15.2.1	Series Guide
3.5	Briefly explain how to scope an architecture.	M-3-S-7/8	Architecture Development Method	P-7-\$1.5	Fun Cont
3.6	Briefly explain the reasons for considering architecture alternatives including understanding concerns and trade-off.	M-3-S-9	Architecture Development Method	P-11-\$1.6	Fun Cont
3.7	Briefly explain the purpose of the Preliminary Phase in developing an Enterprise Architecture Capability.	M-3-S-10	The TOGAF Leader's Guide to Establishing and Evolving an EA Capability	P-100-\$13.1	Series Guide
3.8	Describe the objectives of the Preliminary Phase.	M-3-S-11/12	Architecture Development Method	P-16-\$2.1	Fun Cont
3.9	Briefly explain the purpose of Phase A.	M-3-S-13	A Practitioners' Approach to Developing Enterprise Architecture Following the ADM	P-41-\$5.2.1	Series Guide
		M-3-S-14	A Practitioners' Approach to Developing Enterprise Architecture Following the ADM	P-43-\$5.2.2	Series Guide Table4
3.10	Describe the objectives of Phase A.	M-3-S-15/16	Architecture Development Method	P-30-\$3.1	Fun Cont
3.11	Briefly explain the purpose of Phases B C and D.	M-3-S-17	A Practitioners' Approach to Developing Enterprise Architecture Following the ADM	P-43-\$5.2.2	Series Guide Table4
3.12	Describe the objectives of Phase B.	M-3-S-18/20	Architecture Development Method	P-42-\$4.1	Fun Cont
3.13	Describe the objectives of Phase C for Data Architecture and Application Architecture.	M-3-S-21	Architecture Development Method	P-58-\$5.1	Fun Cont
		M-3-S-22	Architecture Development Method	P-59-\$6.1	Fun Cont
		M-3-S-23	Architecture Development Method	P-71-\$7.1	Fun Cont
3.14	Describe the objectives of Phase D.	M-3-S-24/26	Architecture Development Method	P-62-\$6.1	Fun Cont
3.15	Briefly explain the purpose of Phase E.	M-4-S-5	A Practitioners' Approach to Developing Enterprise Architecture Following the ADM	P-43-\$5.2.2	Series Guide Table4
3.16	Describe the objectives of Phase E.	M-4-S-6/7	Architecture Development Method	P-94-\$9.1	Fun Cont
3.17	Briefly explain the purpose of Phase F.	M-4-S-8	A Practitioners' Approach to Developing Enterprise Architecture Following the ADM	P-43-\$5.2.2	Series Guide Table4
3.18	Describe the objectives of Phase F.	M-4-S-9/10	Architecture Development Method	P-104-\$10.1	Fun Cont
3.19	Briefly explain the purpose of Phase G.	M-4-S-11	A Practitioners' Approach to Developing Enterprise Architecture Following the ADM	P-43-\$5.2.2	Series Guide Table4

©2022 Materials - sole property of Mundo Cognito Ltd - may not be copied or reproduced without written permission

23/27

Notes:

Modules Level 1:

- 00 - Course Information
 - 01 - Overview
 - 02 - Implementation Support Techniques
 - 03 - Introduction to the ADM - Techniques
 - 04 - An Introduction to the ADM
 - 05 – Applying ADM
 - 06 - Architecture Governance
 - 07 – Architecture Content

Index to Level 1 – Foundation Slides 04/06					
Guidance from The Open Group advises that the Series Guides and the Fundamental Content make up the Body of Knowledge. Use of 'Standard' is inaccurate. Both elements constitute the Standard and are referred to as the Bok. In the list below, Book Titles that have 'Standard' printed on the cover are thus referred to as Fundamental Content – abbreviated to Fun Cont.					
LO	Learning Outcome Text	M-Module S-Slide	TOGAF® Volume Name	Reference in Volume	Volume type
3.20	Describe the objectives of Phase G.	M-4-5-12/13	Architecture Development Method	P-112-\$11.1	Fun Cont
3.21	Briefly explain the purpose of Phase H.	M-4-5-15	A Practitioners' Approach to Developing Enterprise Architecture Following the ADM	P-43-\$5.2.2	Series Guide Table
3.22	Describe the objectives of Phase H.	M-4-5-16/17	Architecture Development Method	P-120-\$12.1	Fun Cont
3.23	Describe the objectives of the Requirements Management process.	M-4-5-19/20	Architecture Development Method	P-130-\$13.1	Fun Cont
3.24	Describe the purpose of Requirements Management.	M-4-5-21	A Practitioners' Approach to Developing Enterprise Architecture Following the ADM	P-54-\$6.1.1	Series Guide
3.25	Explain the information flow between the ADM phases.	M-4-5-22	A Practitioners' Approach to Developing Enterprise Architecture Following the ADM	P-40-\$5.2	Series Guide
3.26	Explain how developing architecture for different purposes or levels of detail can be applied to support Agile software development.	M-4-5-23	A Practitioners' Approach to Developing Enterprise Architecture Following the ADM	P-98-\$12.1	Series Guide
4.1	Briefly describe how the ADM and Supporting Guidelines and Techniques relate to each other.	M-4-5-24	Architecture Development Method	P-2-\$1.1.3	Fun Cont
4.2	Explain the purpose of Architecture Principles.	M-5-5-6	The TOGAF Leader's Guide to Establishing and Evolving an EA Capability	P-27-\$4.3.3	Series Guide
4.3	Explain the recommended template for Architecture Principles.	M-5-5-7	ADM Techniques	P-4-\$2.3	Fun Cont
4.4	Explain what makes a good Architecture Principle.	M-5-5-10	ADM Techniques	P-5-\$2.4	Fun Cont
4.5	Briefly explain business scenarios.	M-5-5-11	ADM Techniques	P-6-\$2.4.1	Fun Cont
4.6	Explain the purpose of gap analysis.	M-5-5-8	Business Scenarios	P-1-\$1	Series Guide
4.7	Briefly explain Interoperability and how it is used.	M-5-5-13/14	Introduction and Core Concepts	P-25-\$3.0	Fun Cont
4.8	Explain Business Transformation Readiness Assessment and where it can be used in the ADM.	M-5-5-15/17	ADM Techniques	P-59-\$8.1	Fun Cont
4.9	Briefly explain the characteristics of architecture risk management and where it is used within the TOGAF ADM.	M-5-5-18/21	ADM Techniques	P-67-\$9.1	Fun Cont
5.1	Describe where guidance on how to apply the TOGAF Standard is provided.	M-5-5-23	Introduction and Core Concepts	P-10-\$2.2	Fun Cont
5.2	Explain how iteration within the ADM enables concurrent operation of multiple ADM phases.	M-5-5-24/25	Applying the ADM	P-3-\$2.1	Fun Cont
5.3	List the three levels of the architecture Landscape.	M-5-5-26	Applying the ADM	P-17-\$3.2	Fun Cont
5.4	Briefly explain how partitioning helps simplify the development of an Enterprise Architecture.	M-5-5-27	Applying the ADM	P-21-\$4.1	Fun Cont

©2022 Materials – sole property of Mundo Cognito Ltd – may not be copied or reproduced without written permission

24/27

Notes:

Modules Level 1:

- 00 - Course Information

- 01 - Overview

- 02 - Implementation Support Techniques

- 03 - Introduction to the ADM - Techniques

- 04 - An Introduction to the ADM

- 05 – Applying ADM

- 06 - Architecture Governance

- 07 – Architecture Content

Index to Level 1 – Foundation Slides 05/06



Guidance from The Open Group advises that the Series Guides and the Fundamental Content make up the Body of Knowledge. Use of 'Standard' is inaccurate. Both elements constitute the Standard and are referred to as the BoK. In the list below, Book Titles that have 'Standard' printed on the cover are thus referred to as Fundamental Content – abbreviated to Fun Cont.

LO	Learning Outcome Text	M-Module S-Slide	TOGAF® Volume Name	Reference in Volume	Volume type
5.5	List the four purposes that help to frame the planning horizon and breadth and depth of the Architecture Project.	M-5-S-28	A Practitioners' Approach to Developing Enterprise Architecture Following the ADM	P-13-§3.2.2	Series Guide
5.6	Briefly explain how the TOGAF Standard can be applied to support the Digital enterprise.	M-5-S-29	Using the TOGAF Standard in the Digital Enterprise	P-17-§2.1	Series Guide
6.1	Briefly explain the concept of Architecture Governance.	M-5-S-30	Enterprise Architecture Capability and Governance	P-9-§3.1	Fun Cont
6.2	Explain why Architecture Governance is beneficial.	M-5-S-31	Enterprise Architecture Capability and Governance	P-13-§3.2	Fun Cont
6.3	Briefly explain the role of an Architecture Board and its responsibilities.	M-6-S-4/6	Enterprise Architecture Capability and Governance	P-21-§4.1	Fun Cont
		M-6-S-7	Enterprise Architecture Capability and Governance	P-21-§4.2	Fun Cont
		M-6-S-8/10	A Practitioners' Approach to Developing Enterprise Architecture Following the ADM	P-56-§6.2	Series Guide
6.4	Briefly explain the role of Architecture Contracts.	M-6-S-11/13	Enterprise Architecture Capability and Governance	P-27-§5.1	Fun Cont
6.5	Briefly explain the need for Architecture Compliance.	M-6-S-14	Enterprise Architecture Capability and Governance	P-31-§6.1	Fun Cont
7.1	Define and explain the following key concepts: stakeholders concerns architecture views architecture viewpoints and their relationships.	M-6-S-15/18	Architecture Content	P-31-§3.1	Fun Cont
7.2	Explain what building blocks are and their use in the ADM.	M-6-S-19	Architecture Content	P-79-§5.2.2	Fun Cont
		M-6-S-20	Architecture Content	P-80-§5.3.2	Fun Cont
7.3	Briefly describe the TOGAF Standard deliverables created and consumed in different TOGAF ADM phases.	M-7-S-5	Architecture Content	P-65-§4.2.2	Fun Cont
		M-7-S-7	Architecture Content	P-64-§4.2	Fun Cont
		M-7-S-8	Architecture Content	P-67-§4.2.4	Fun Cont
		M-7-S-9	Architecture Content	P-68-§4.2.6	Fun Cont
		M-7-S-10	Architecture Content	P-69-§4.2.7	Fun Cont
		M-7-S-11/12	Architecture Content	P-70-§4.2.8	Fun Cont
		M-7-S-13	Architecture Content	P-70-§4.2.9	Fun Cont
		M-7-S-14/15	Architecture Content	P-71-§4.2.10/20	Fun Cont

Notes:
