



MOON JOURNAL

Achieve your goals and live more
mindfully with the cycle of the moon.





Disclaimer

The insights presented in this book are based on publicly available knowledge, established spiritual traditions, and the author's personal interpretation. While the author presents these ideas in their own words and from their own perspective, no claim is made to the original authorship of these concepts.

Author: Nienke Brouwer

Cover Design: Nienke Brouwer

First edition June 2026

ISBN: 9789403910031





TABLE OF CONTENTS

- Living with the moon
- The Moon: Facts & Characteristics
- The Moon Cycle
- The Phases of the Moon
- How to Use This Moon Journal
- Meditation
- Affirmations
- Journal Pages for 24 Cycles
- Space for notes
- Cut-Out Poster Page



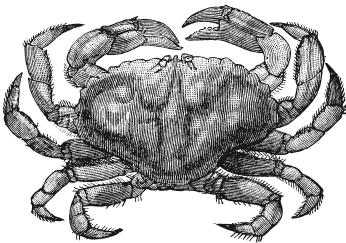
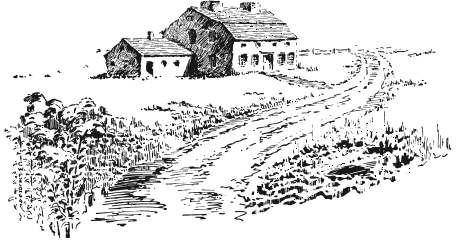


LIVING WITH THE MOON

In this first chapter, you will discover why the cycles of the Moon are deeply intertwined with our history, the Earth, and human culture.

Before Clocks Existed

The lunar cycle is one of the oldest methods of timekeeping known to humanity. Archaeological discoveries show that early civilizations organized their lives around the cycles of the Moon. From determining the timing of planting, harvesting and celebrations to creating the earliest known lunar calendars, the Moon served as a reliable timekeeper long before clocks existed.



The Natural Power of the Moon

With its gravity, the Moon controls the rhythm of ebb and flow. This dance also affects the inhabitants of the water. Corals, for example, synchronize their reproduction with the full Moon, and some crab species also align their mating cycles with specific tides.

Because the human body consists of about 60% water, some people believe that the lunar cycle may also have a subtle influence on our physical and emotional state.





The Spiritual Meaning of the Moon

The Moon has played an important role in spiritual traditions around the world for centuries. The Moon is often associated with intuition, feminine energy, emotions, and the subconscious. Its cyclical nature, from new to full and back again, symbolizes the natural rhythms of growth, fullness, release, and renewal that we encounter in many aspects of life.

In different cultures, the Moon represents a form of wisdom that comes from observation, reflection, and connection with nature. The Moon invites us to pay attention to the subtle changes within ourselves and the world around us, and reminds us that change is a natural part of life.



Why live with the Moon?

The Moon's regular cycle offers a natural rhythm for personal growth and reflection. By consciously living with these cycles, we can:

- Be more mindful in planning and reflection.
- Work more consistently toward our goals.
- Balance moments of action and rest more effectively.
- Add a sense of ritual and meaning to daily life.
- Make great progress through small steps.

This Moon Journal is specially designed to support you in living, learning, and growing with the Moon.

THE MOON: FACTS & CHARACTERISTICS

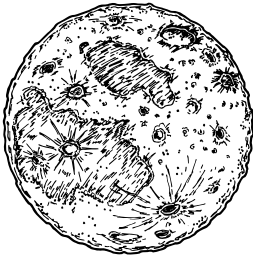
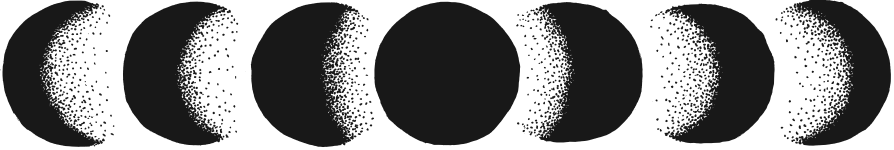
Cosmic Companion of the Earth

The Moon is the only natural satellite of our planet and is located at an average distance of 384,400 kilometers from Earth. Although the Moon is relatively close, you could fit almost 30 Earths between Earth and the Moon. With a diameter of about 3,474 kilometers, our Moon is the fifth-largest moon in our solar system.



Formation and Geology

The most widely accepted theory about the Moon's origin is the Giant Impact hypothesis: about 4.5 billion years ago, an object about the size of Mars (called Theia) collided with the young Earth. The debris that was thrown into space during this impact eventually formed our Moon.



The Moon's surface consists of:

- Dark plains, known as maria (Latin for “seas”), which are actually solidified lava.
- Lighter highlands with many craters.
- Mountain ranges, some of which are even higher than Mount Everest.
- Deep canyons and valleys.

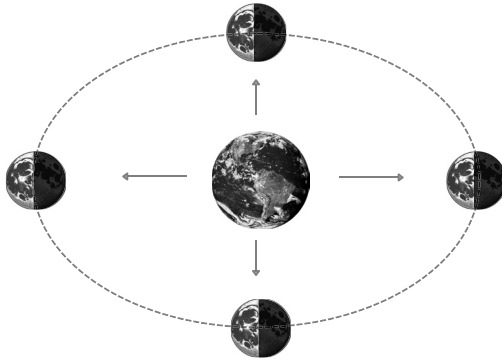
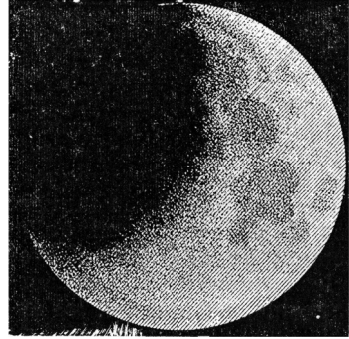
Unlike Earth, the Moon has no atmosphere or magnetic field, and therefore no protection from meteorites or solar radiation. This explains the countless craters that mark the Moon's surface.



THE MOON CYCLE

Why does the Moon change shape?

The Moon appears to change shape because from Earth we always see the same side of the Moon, while the Moon moves in its orbit around the Earth. The Sun always lights up one half of the Moon, but depending on the position of the Moon relative to the Earth and the Sun, we see different parts of that illuminated half.



The curved shadow line we see on crescent Moons is caused by the Moon being a sphere rather than a flat disk. Sunlight falls across its curved surface, creating a curved boundary between light and darkness.



Timing of the Moon Phases

Although the Moon completes one full orbit around the Earth in about 27.3 days (this is called a sidereal month), a complete cycle of lunar phases takes 29.5 days (a synodic month). This difference occurs because the Earth is also moving around the Sun at the same time, meaning the Moon has to travel a little further to return to the same position relative to the Sun.





THE PHASES OF THE MOON and their symbolic meaning

The lunar cycle consists of four main phases. Each phase has its own symbolic meaning. By consciously living in sync with these phases, you can align your activities and intentions with the natural rhythm the Moon offers.



New Moon

Appearance: During this phase, the Moon is positioned between the Earth and the Sun, so we see the unlit side of the Moon, making it nearly invisible.

Meaning: The New Moon symbolizes a new beginning, a clean slate. It is a time of darkness and stillness, where we turn inward to set our wishes and intentions. It is a moment of potential and possibilities, when the seeds for the coming cycle are planted

Suitable activities: Setting intentions, defining goals, starting and planning new projects, meditating, writing affirmations, creating a vision board, and decluttering.



First Quarter

Appearance: During this phase, the right side of the Moon is half illuminated (in the Northern Hemisphere).

Meaning: The First Quarter brings challenges that test our determination. This is a time for decisions and perseverance. We are invited to overcome obstacles and continue with what we started during the New Moon.

Suitable activities: Making to-do lists, asking for help, writing affirmations, meditating, making decisions, and picking up unfinished projects.



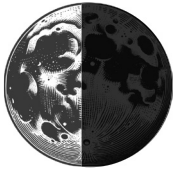


Full Moon

Appearance: The Earth is positioned directly between the Moon and the Sun, so we see the fully illuminated side of the Moon.

Meaning: The Full Moon represents fullness, manifestation, and harvest. This is the peak of the cycle, when energy is at its strongest. It is a time of celebration, revelation, and seeing the results of what we have set in motion.

Activities: Expressing gratitude, celebrating your successes, meditating, formulating affirmations, and sharing your achievements with others.

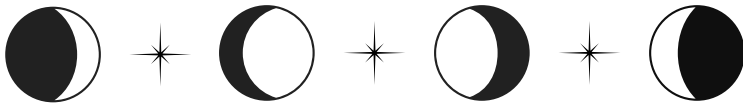


Last Quarter

Appearance: The left side of the Moon is half illuminated (in the Northern Hemisphere).

Meaning: The Last Quarter invites letting go and forgiveness. This is a period of cleansing, where we release what no longer serves us. We make space for what will come in the next cycle.

Activities: Decluttering, reflecting on lessons learned, resting, and forgiving.



Between these main phases, there are also four intermediate phases:

Waxing Crescent (between New Moon and First Quarter)

Waxing Moon (between First Quarter and Full Moon)

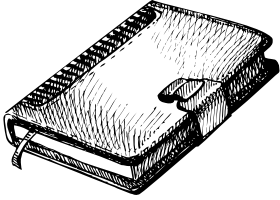
Waning Moon (between Full Moon and Last Quarter)

Ashen Moon (between Last Quarter and New Moon)

In this journal, we will focus only on the four main phases to keep things more clear and simple.

HOW TO USE THIS MOON JOURNAL

This Moon journal is specially designed to guide you in living with the Moon. By staying consistently and consciously focused on what you want to achieve, you can make steady progress step by step and create meaningful growth over time.

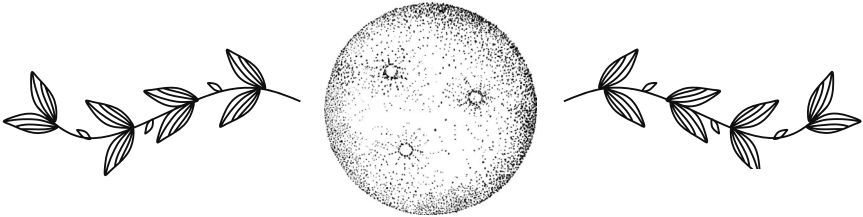


The Basics

The journal is built around the four main phases of the Moon. For each phase, you will find specific questions that guide you in setting intentions, taking action, reflecting, celebrating progress, and letting go of what no longer works.

You Choose What You Work On

With this Moon journal, you decide what you need in your life, for example: building a new habit, decluttering your space, taking better care of yourself, meeting up with friends more often, finishing a project, or reading a book. Ask yourself at the start of each cycle what you need and what you would like to achieve. Do you have bigger goals in mind? Break them down into smaller, manageable steps. This way, even ambitious plans become realistic and achievable.



When to Use the Journal

Ideally, you consult this journal at each transition to a new Moon phase, which happens roughly every 7 to 8 days. In between these moments of reflection, you continue working daily on the goals you have set. The journal therefore gives you regular opportunities to adjust and stay aware of your progress.





Tips for Effective Use

Track the Moon phases: Use a lunar calendar or an app to know which phase the Moon is in. Set a reminder so you don't forget to update your journal with each new phase.

Stay realistic and flexible: It's not about perfection, but about progress. Set achievable goals and don't be too hard on yourself if you don't reach them within a month. Every small step counts and moves you forward.

Integrate it into your daily planning: Let the symbolic meaning of each Moon phase influence your daily and weekly planning. For example, schedule brainstorming sessions and new projects around the New Moon, and use the Last Quarter as a moment for reflection and evaluation.

Prepare with meditation: Try meditating before filling in your Moon journal. This helps you become more aware of what is going on within yourself and in your life. The next page explains what meditation is and how you can apply it.

Goodluck and enjoy!

This Moon journal invites you to live more consciously and to work consistently on what matters most to you. It helps you celebrate your successes, no matter how small, reflect on your growth, and take time to rest when needed. I hope it supports you in your personal development, and that you also enjoy the journey along the way.





MEDITATION

Meditation is an attention exercise in which you train your brain and mind to focus. You learn to observe your thoughts and feelings without getting carried away by them. This helps you become more present in the current moment.



How Meditation Helps You

Meditation offers several benefits that support you in working with your Moon journal:

Increased awareness: You become more aware of your thoughts, feelings, and habits, leading to greater insight and clarity.

Stress reduction: Meditation helps calm your body and mind, reducing stress and tension.

Improved focus: By regularly practicing attention, you train your ability to concentrate.

Deeper self-reflection and compassion: You develop more understanding for yourself and others, contributing to inner peace and connection.

Dealing with emotions: Meditation teaches you to notice emotions without being carried away by them, helping you build emotional resilience.

For best results, you can meditate daily, but at the very least take a short moment to meditate before writing in your Moon journal. This helps you reflect in a more mindful and centered way.

